



[54] INVESTMENT FUND MANAGEMENT METHOD AND SYSTEM WITH DYNAMIC RISK ADJUSTED ALLOCATION OF ASSETS

Kleinholz, Lisa, "Can Software help you get rich?", Home Office Computing vol. 8, No. 8, pp. 30-32, Aug. 1990.

[75] Inventors: Donald L. Luskin, Menlo Park; Lawrence G. Tint, Atherton, both of Calif.

Primary Examiner—Bryan Tung
Attorney, Agent, or Firm—Fenwick & West LLP

[73] Assignee: Barclays Global Investors, National Association, San Francisco, Calif.

[57] ABSTRACT

[21] Appl. No.: 404,190

An invention for managing assets in one or more investment funds over a specified time. A fund comprises a plurality of assets (e.g., stocks bonds, currencies, gold, silver, oil, gas). A time horizon H, representing the expected date at which cash will be withdrawn from the fund is associated with each fund. A time L_H represents the length of time remaining between the present time and the horizon time H. A risk tolerance, R_p, changes as a function of the decreasing time to horizon L_H. Typically, the risk tolerance decreases as the fund approaches the time horizon H, (e.g., investments become more conservative toward the end of the life of the fund). A strategic investment mix of assets in the fund is periodically determined as a function of the changing risk, R_t. Investment modifications are accordingly made in the mix of assets in the fund. In one embodiment, a fund also includes a tactical investment strategy component (e.g., representing 25% of the overall investment strategy). The tactical investment strategy is based on the strategic investment mix. Typically, the percent of strategic investments directed to equity-type assets is used to define the percent of tactical investment that is directed to a first tactical investment allocation strategy. The remaining tactical investment amount is directed to a second tactical investment allocation strategy.

[22] Filed: Mar. 13, 1995

Related U.S. Application Data

[63] Continuation-in-part of Ser. No. 108,438, Aug. 18, 1993, abandoned.

[51] Int. Cl. 6 B06F 17/30

[52] U.S. Cl. 705/36

[58] Field of Search 395/236, 237, 395/235; 705/36, 37, 35

[56] References Cited

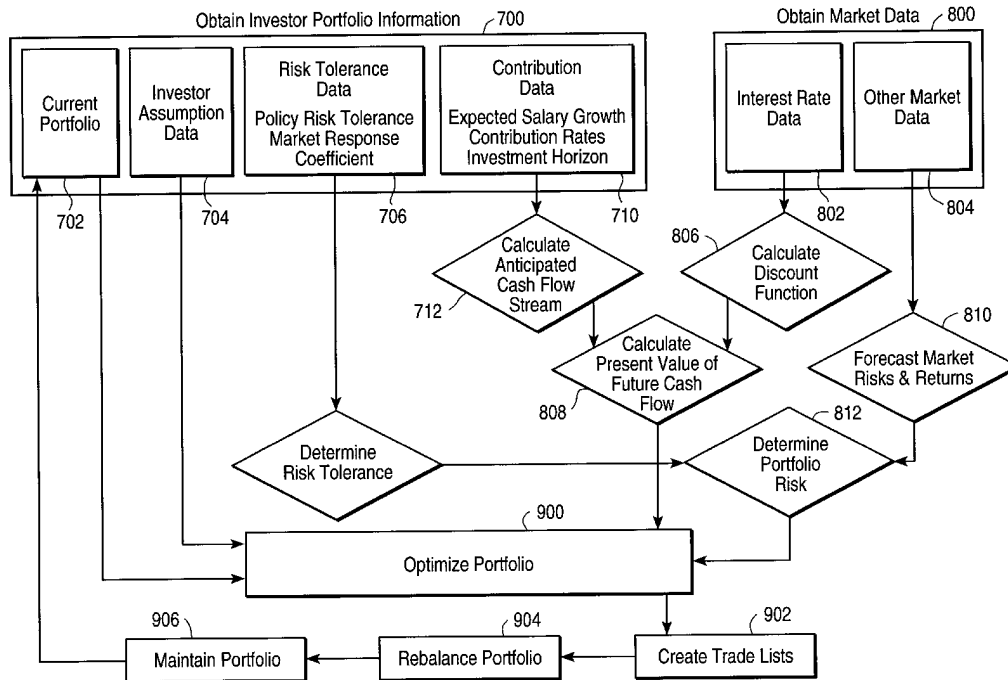
U.S. PATENT DOCUMENTS

- 4,752,877 6/1988 Roberts et al. 395/235
4,953,085 8/1990 Atkins 395/236
5,101,353 3/1992 Lupien et al. 395/237
5,126,936 6/1992 Champion et al. 395/236

OTHER PUBLICATIONS

- "Moneyfor Mutual Funds", Direct Mail Packet, Moneyfor Management, Inc., New Jersey, May 8, 1989.
"Moneyfor Broker Dealer Owner Participation Executive Summary", Moneyfor Management, Inc., New Jersey, 1989.

16 Claims, 9 Drawing Sheets



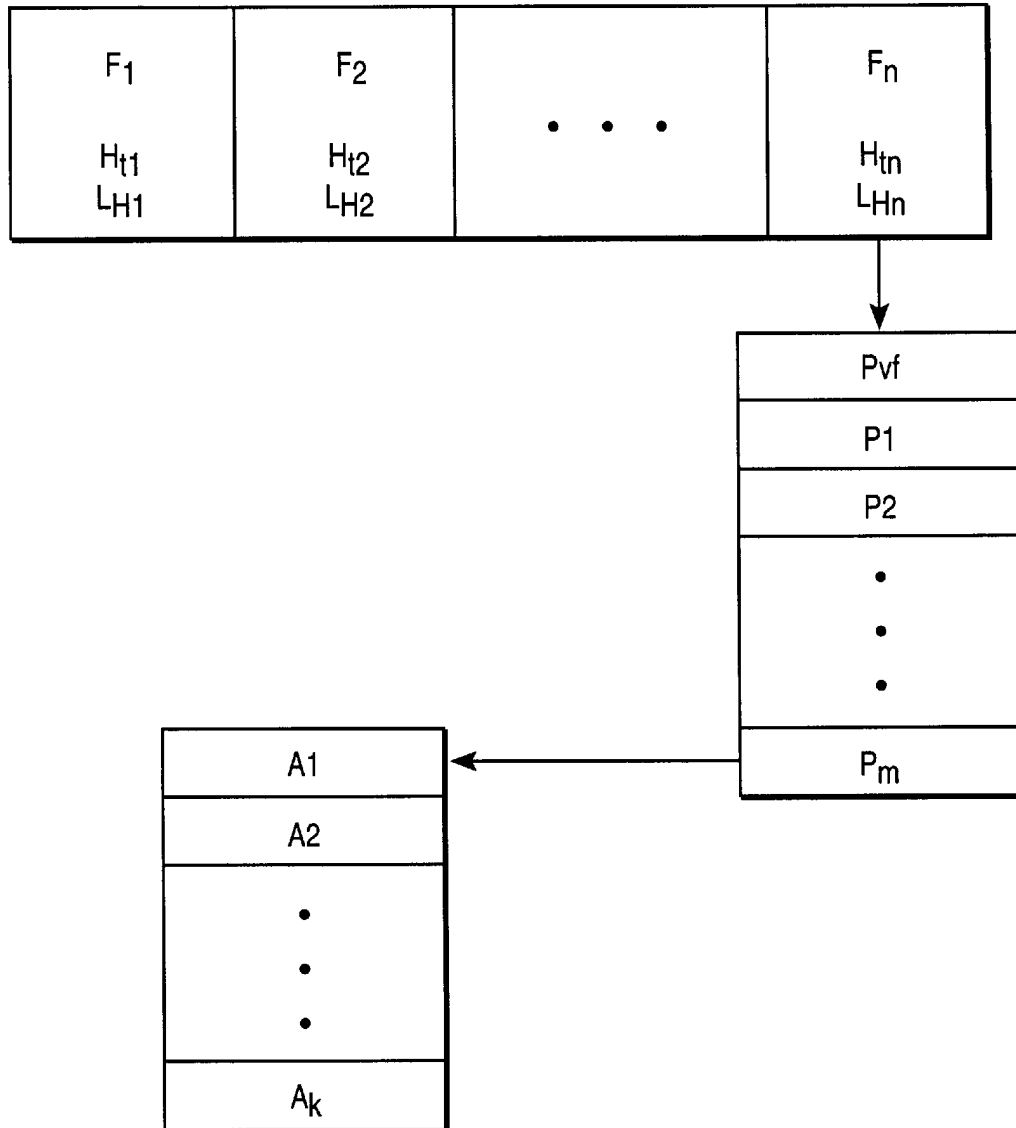


Fig. 1

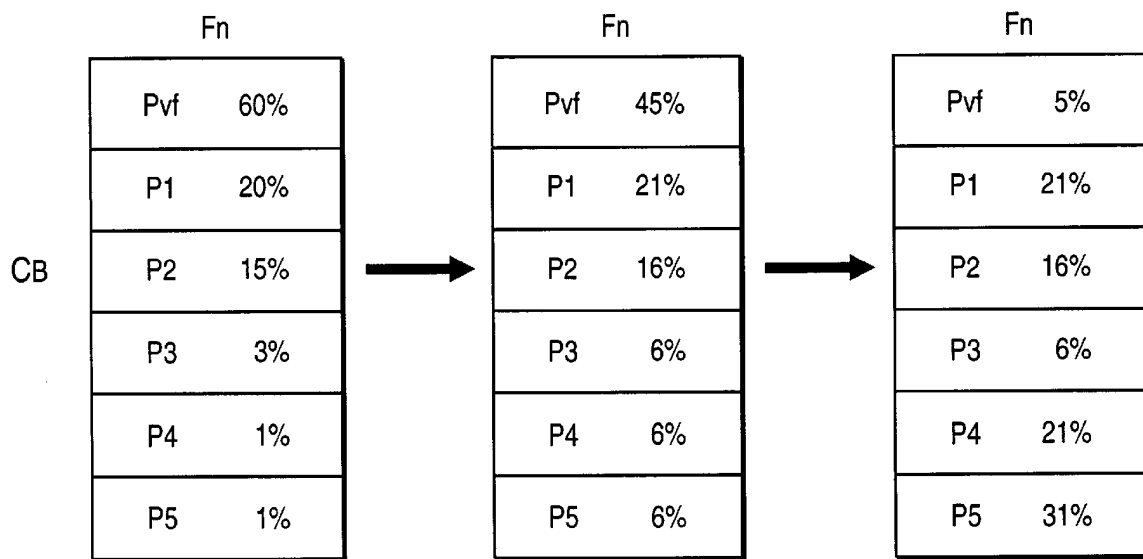


Fig. 2

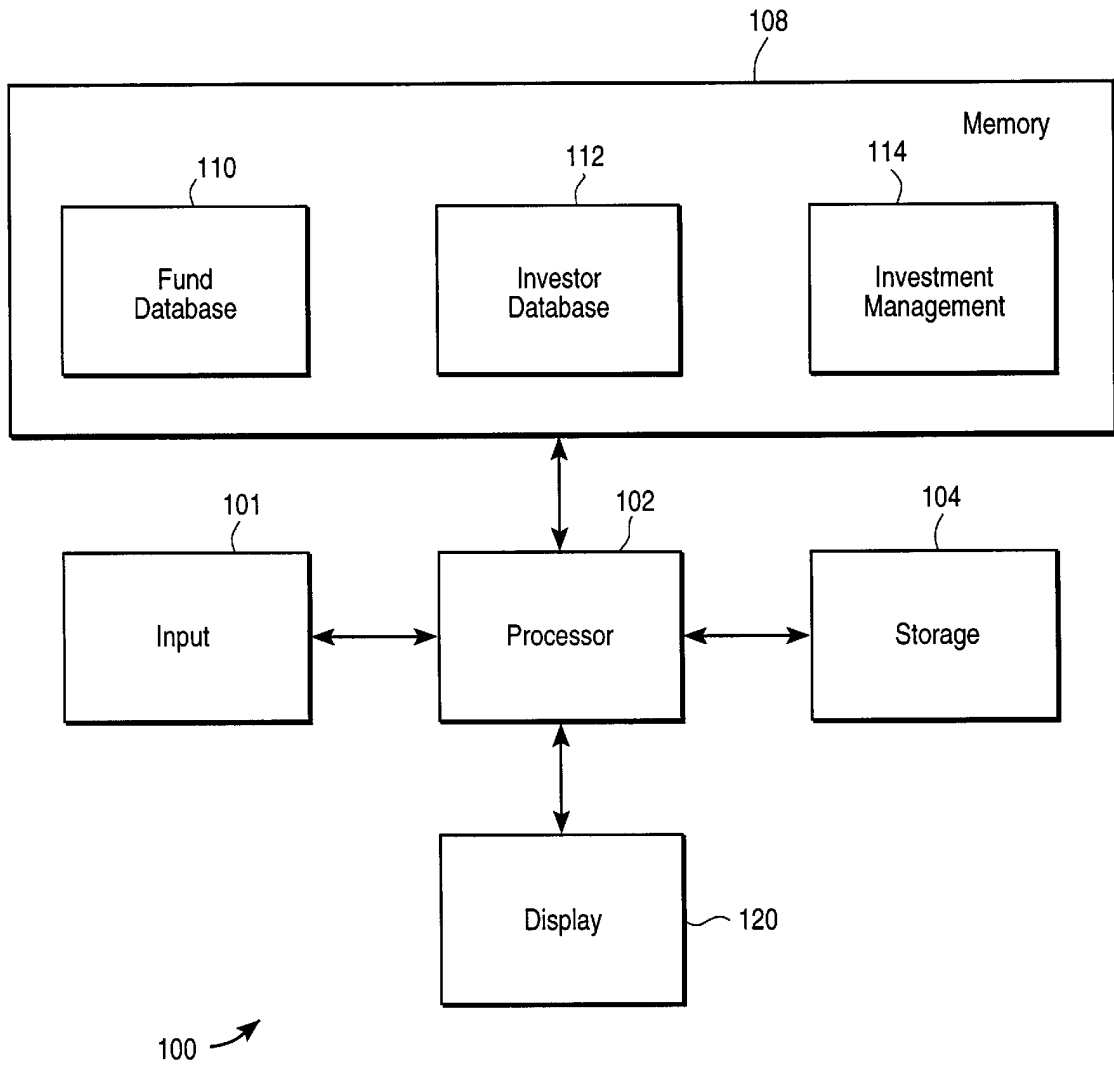


Fig. 3

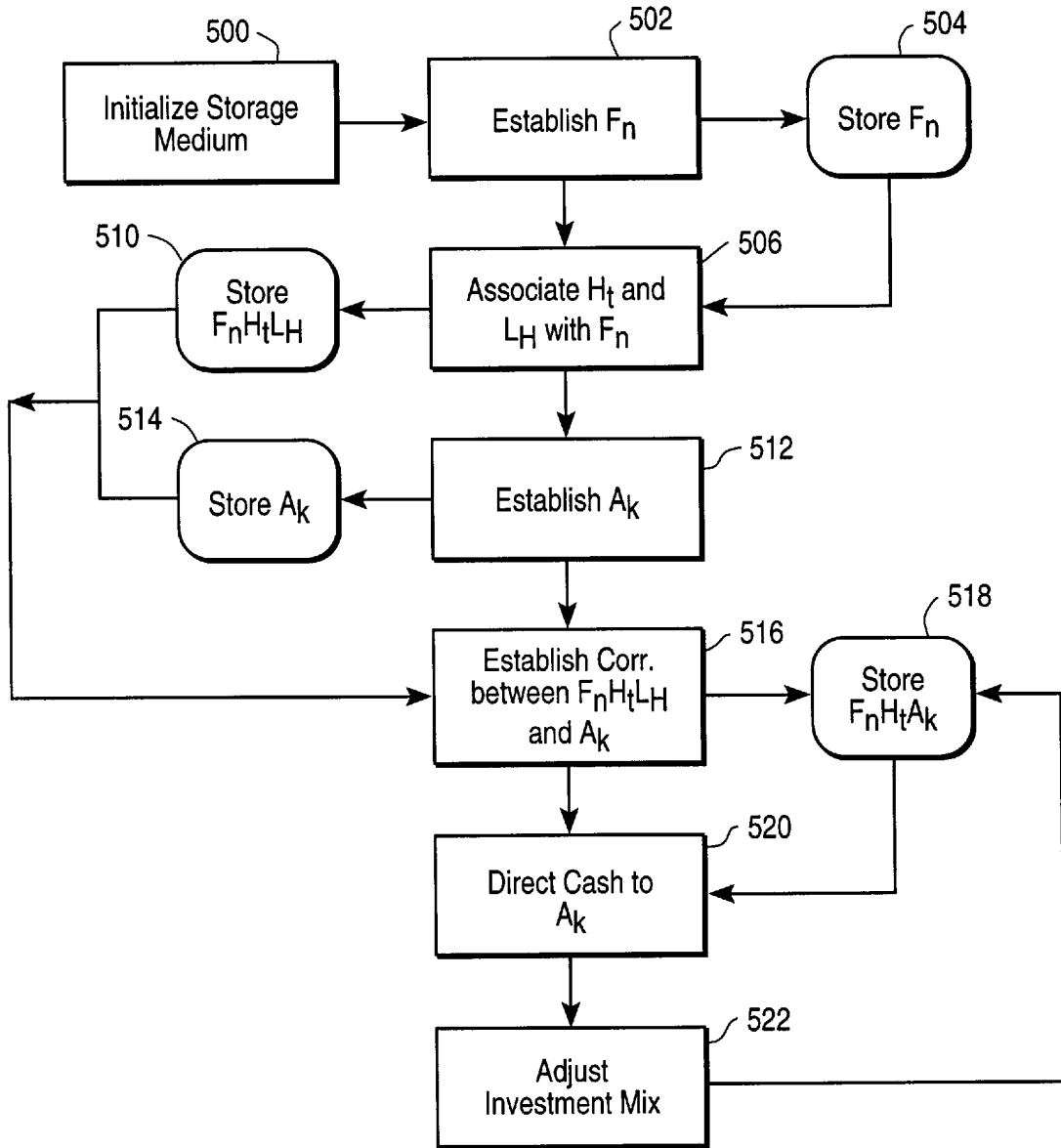


Fig. 4

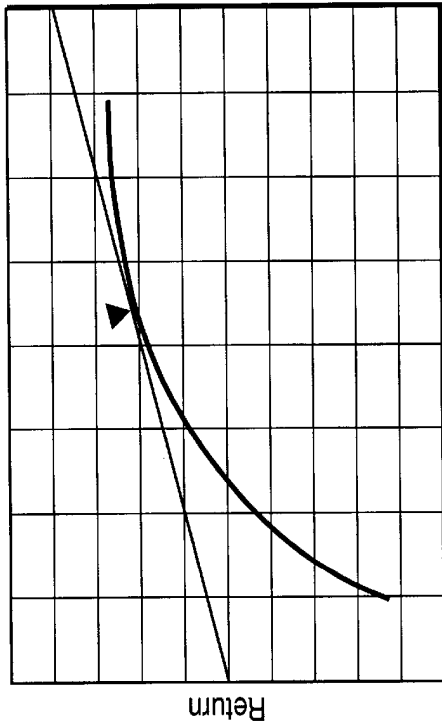


Fig. 5B

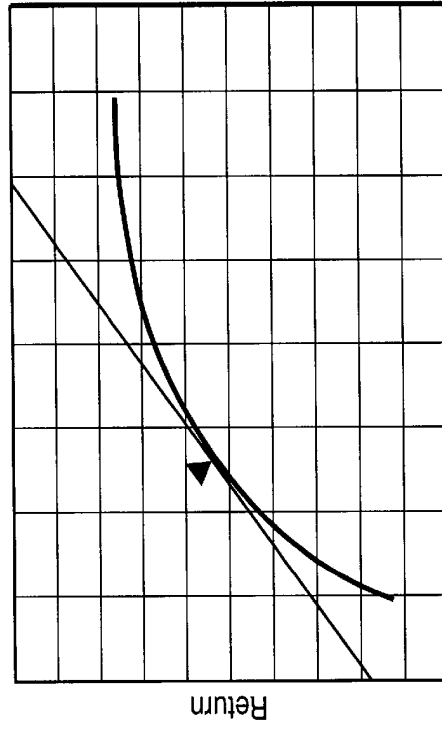


Fig. 5D

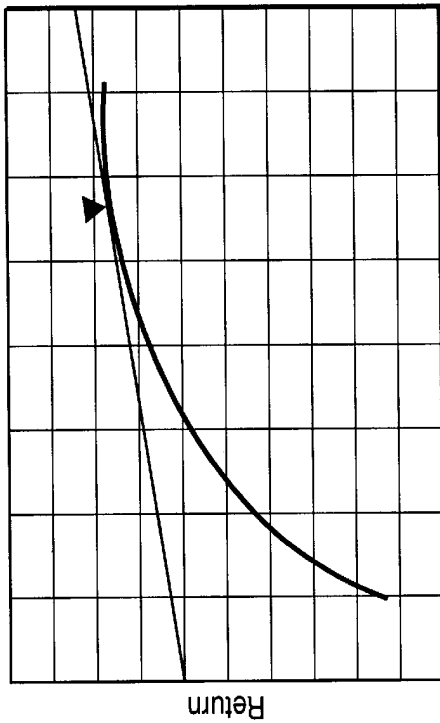


Fig. 5A

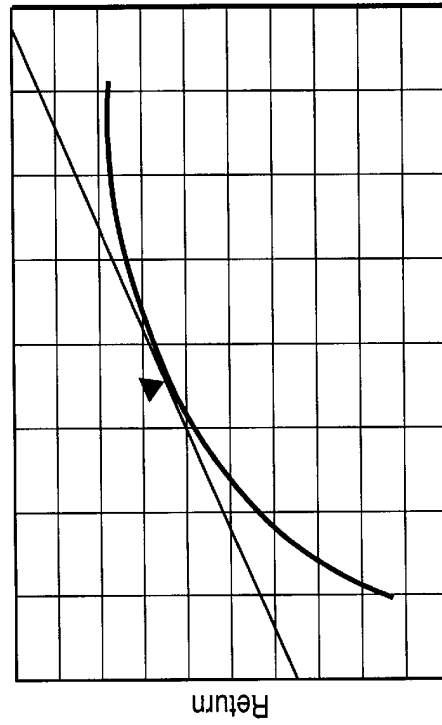


Fig. 5C

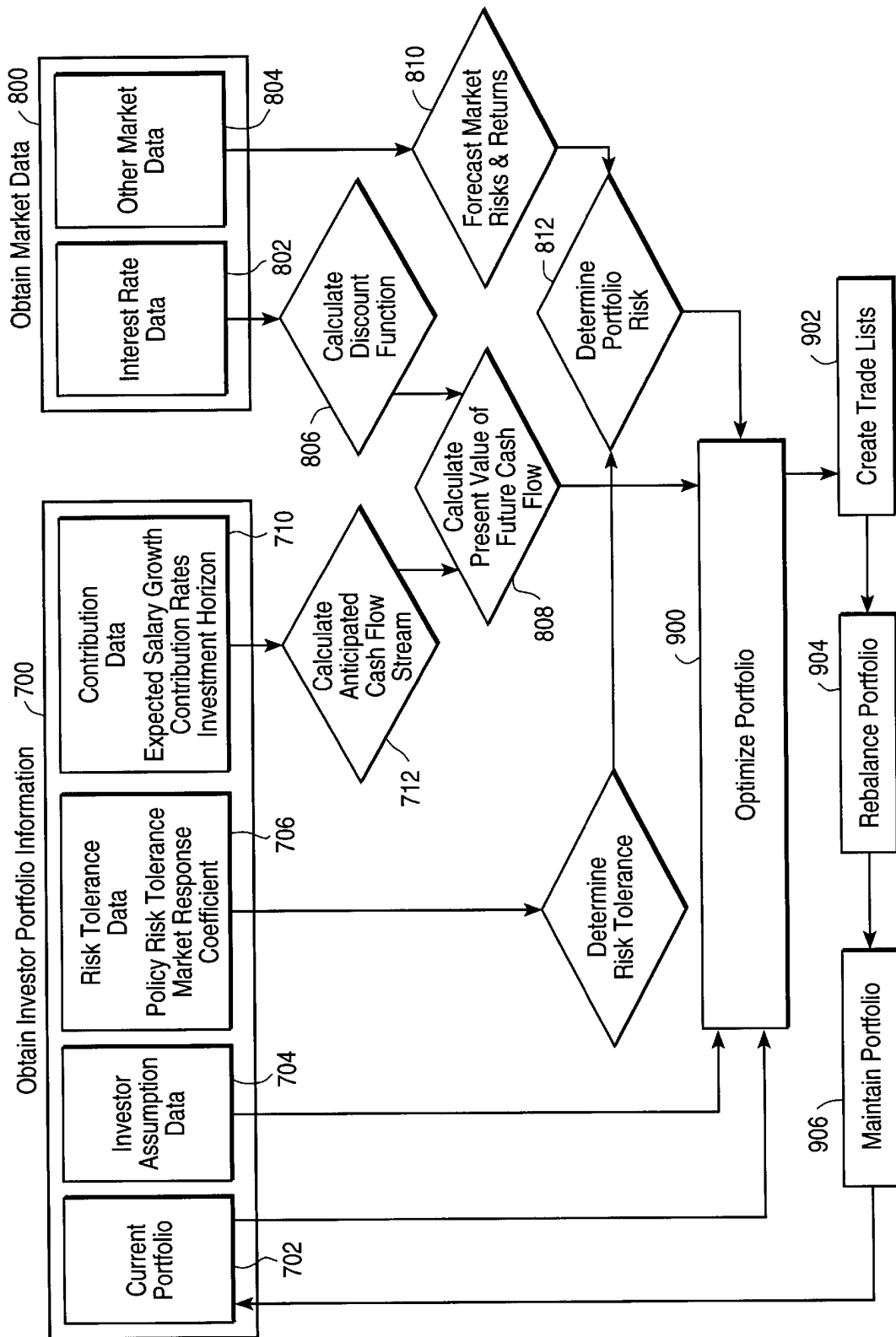


Fig. 6

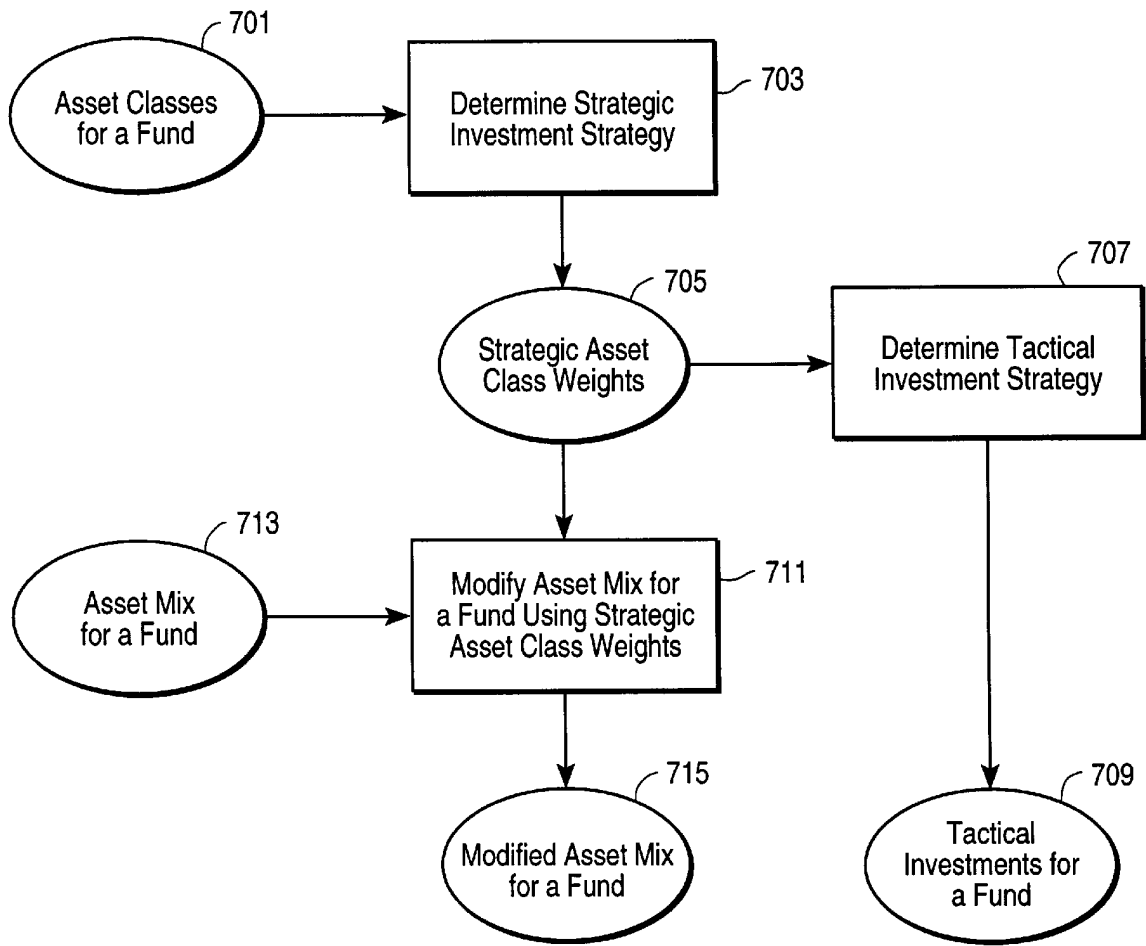


Fig. 7

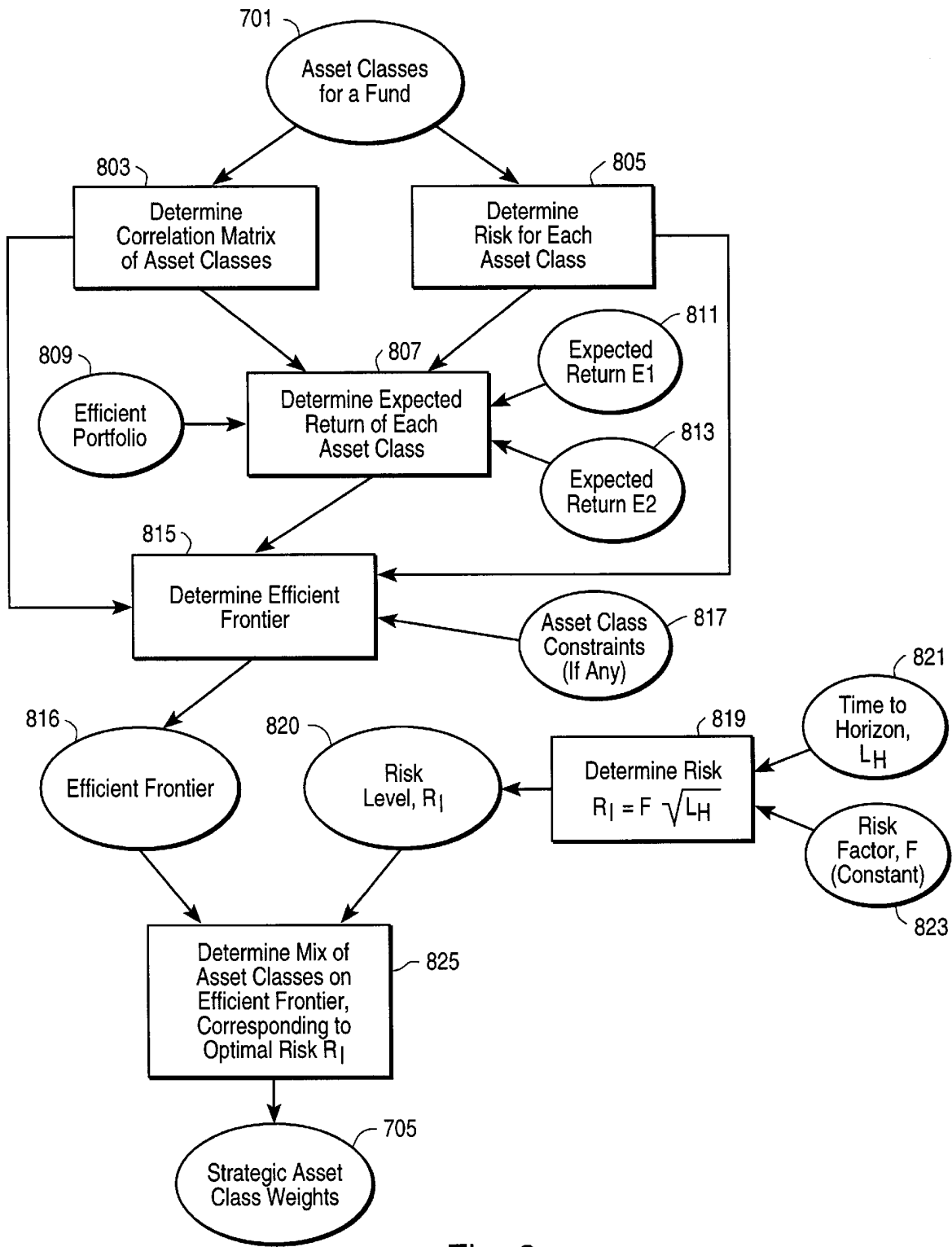


Fig. 8

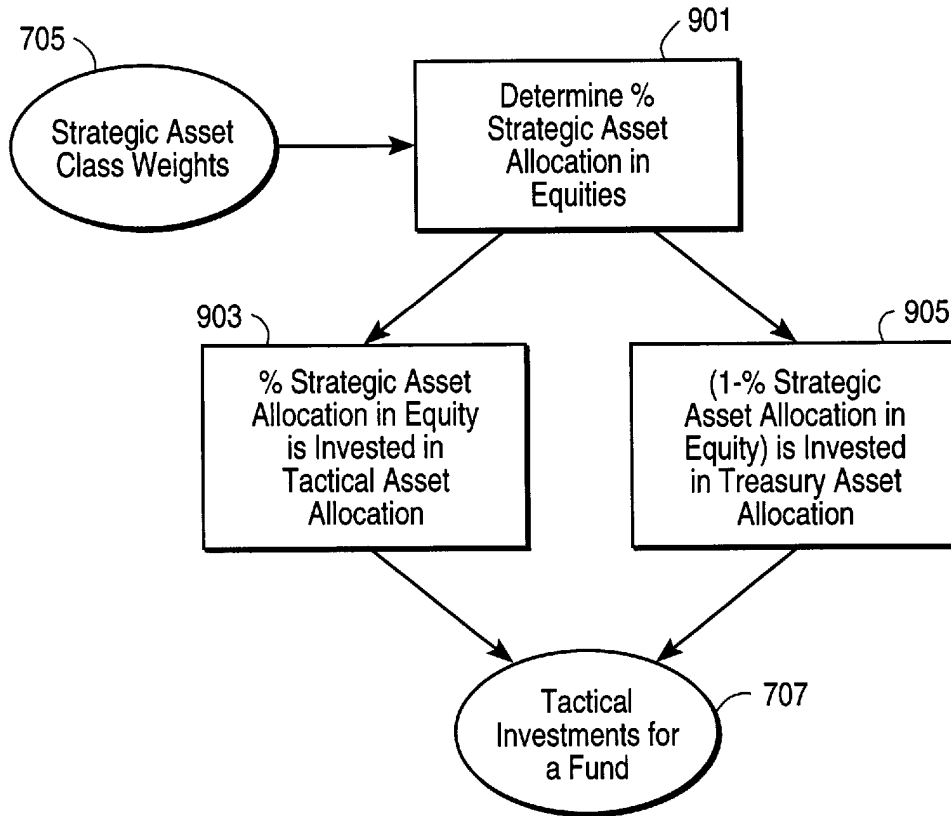


Fig. 9

**INVESTMENT FUND MANAGEMENT
METHOD AND SYSTEM WITH DYNAMIC
RISK ADJUSTED ALLOCATION OF ASSETS**

CROSS-REFERENCE TO RELATED
APPLICATION

The application is a continuation-in-part of U.S. patent application Ser. No. 08/108,438, "Investment Fund Management Method and System," by Luskin et al., filed Aug. 18, 1993 now abandoned, which subject matter is incorporated herein by reference.

BACKGROUND OF THE INVENTION

1. Field of the Invention

The present invention relates generally to computer management systems, and specifically to the field of investment fund management systems.

2. Background of the Invention

Long-term investment plans, such as pension plans, enable an investor to save for retirement. Pension plans typically are divided into two types: defined benefit plans; and defined contribution plans. A defined benefit plan involves a promise made by an employer of a lifetime definite benefit paid to the recipient after retirement. The employer funds the promise by investing in trust for the recipient. In a defined contribution plan, the employer and/or the employees contribute a definite amount of money to an investment plan. The benefit paid after retirement is uncertain; it is determined by the performance of the investment plan. 401K plans are an example of defined contribution plans.

In a typical defined contribution plan, the employer establishes a group of investment funds of specified characteristics, from which the employee may select. The group of funds typically is diverse, including funds specializing in bonds, stocks, money markets, currencies, cash, gold, silver, oil, gas, or other precious metals and minerals, and other asset classes, or combinations of asset classes. These funds may be collective investment funds or mutual funds, managed by the employer or by a third party.

An employee typically invests in a fund having characteristics matching his or her investment preferences, such as high-risk/high expected return or low-risk/low expected return. Over time, as the employee's investment preferences change, that employee may move his or her investment from one fund to another to reflect a change in preferences. But because the typical employee generally is not a trained investment expert, it is possible that sub-optimal selections may be made from among the funds, and that the selections are not optimally revised over time.

Many employees in defined contribution plans do not appreciate that investments with high-risk and high expected return—such as equity securities—may be appropriate even for risk averse investors if their time horizons are sufficiently far in the future, and if the investment is properly diversified. Thus, many employees tend to invest more conservatively than an investment expert would do under like circumstances. Because conservative investments generally have low returns over the long term, an unnecessarily risk-averse strategy may be expected to produce disappointing long-term performance.

Many employees in defined contribution plans do not possess sufficient expertise to select investment funds to match their risk preferences, even when their risk preferences are appropriate. As a result, investments may be

selected that either expose an employee to unexpected risks, or expose the employee to unexpectedly low returns.

Finally, many employees in defined contribution plans do not possess sufficient expertise, or wish to devote sufficient time and attention, to appropriately revise their selection of funds as market conditions change, and as their own life circumstances change. If an employee neglects to revise his or her investments, or revises them inappropriately—perhaps due to emotions of fear or greed—that employee will be exposed to unexpected and inappropriate risks when market conditions change, or when his or her own life circumstances change.

The typical employee generally is unwilling to pay the costs to obtain private professional investment advice, or may be unaware that it is available. The typical employer generally is unwilling to provide advice to employees, either due to a lack of sufficient expertise, or due to an unwillingness to bear potential legal liabilities. Thus, there remains a need for a system and method for a typical employee in a defined contribution plan to make appropriate investments, to reflect appropriate long-term trade-offs of risk and return, to select investments that accurately reflect those trade-offs, and to revise those investments through time in response to changing market conditions and the employee's changing preferences.

SUMMARY OF THE INVENTION

The present invention relates to a method and system for managing assets in one or more funds over a specified life of the fund. A fund F_n has associated therewith a plurality of assets. Assets may be, for example, bonds, stocks, money markets, cash, gold, silver, oil, gas, other precious metals and minerals, and the like. A time horizon H_t is associated with each fund F_n . The time horizon H_t defines the expected date at which cash may need to be withdrawn from the fund and has an associated parameter L_H representative of the length of time remaining between the present and the time horizon H_t . The investment mix of a fund is strategically adjusted at periodic intervals in accordance with some criteria that are related to the diminishing length to time horizon L_H . The criteria may include a risk level R_t that changes as a function of the remaining length to time horizon L_H associated with each fund. Typically, the risk value decreases as the fund approaches the time horizon H_t (e.g., investments become more conservative towards the end of the life of the fund).

In one embodiment, a fund has both a strategic investment strategy, as described above, and a tactical investment strategy. In a preferred embodiment, 75% of the investment strategy (e.g., cash, 401K, or other investments) is based on the strategic investment component, and 25% is based on the tactical investment component. The tactical investment strategy is based on the strategic investment mix. Typically, the percent of strategic investments directed to equity-type assets is used to define the percent of tactical investment that is directed to a first tactical investment allocation strategy (e.g., as defined by the Wells Fargo Tactical Asset Allocation). The percent of strategic investments directed to non-equity-type assets is used to define the percent of tactical investment that is directed to a second tactical investment allocation strategy (e.g., as defined by the Wells Fargo U.S. Treasury Asset Allocation).

The asset management system and method of the present invention is implemented in a conventional computer system comprising a processor, storage, and memory. A software program implemented in the memory and executed on the

processor of the computer controls the asset management system. Adjustments in the mix of the fund involve physically selling or buying tangible assets (e.g., stocks, bonds, paper, currencies, gold, silver, precious metals and minerals, oil, gas) on the open market.

BRIEF DESCRIPTION OF THE FIGURES

FIG. 1 illustrates an exemplary investment fund structure embodying the present invention.

FIG. 2 illustrates a shift in distribution of cash among the portfolios of an exemplary fund, over the life of the fund, in accordance with the present invention.

FIG. 3 is a block diagram of an exemplary data processing system embodying the present invention.

FIG. 4 is a flow chart illustrating one embodiment of the present invention.

FIGS. 5A–5D are return-to-risk charts of exemplary funds managed in accordance with the present invention.

FIG. 6 is a flow chart illustrating one embodiment of the present invention.

FIG. 7 is a high-level flow chart illustrating one embodiment of the investment management method of the present invention.

FIG. 8 is a flow chart of the determination of strategic asset class weights.

FIG. 9 is a flow chart of the determination of tactical investments.

DESCRIPTION OF THE PREFERRED EMBODIMENTS

The present invention is a system and method for managing assets in investment funds wherein each fund has a fixed time horizon H_t and a diminishing length to horizon L_H . That is, the fund is managed by manipulating the investment mix of the fund in accordance with some criteria related to the diminishing length to horizon L_H of the fund.

Generally, the method includes establishing an investment fund F_n with an associated fixed time horizon H_t and a diminishing length to horizon L_H . A relationship is established between at least one investment asset and the fund in accordance with a first set of criteria. Assets may be, for example, stocks, bonds, paper, currencies, gold, silver, precious metals and minerals, oil, gas and the like. Such tangible assets are physically bought and possessed, and/or sold and disposed of on the open market. One or more assets may be associated with a portfolio, which portfolio may be in some relationship with the fund. Cash may be directed to selected ones of the assets or portfolios to establish an investment mix for the investment fund. Cash, as used herein, may refer to any assets of value. According to the invention, the investment mix is adjusted as a function of the diminishing length to horizon L_H of the investment fund F_n . Thus, as the investment fund matures, the investment mix is changed.

One exemplary manner in which the investment mix may change over the life of the fund is to change the distribution of new cash across the portfolios as such cash is invested in the fund or otherwise becomes available. Another manner is to change the asset or portfolio mix by exchanging assets or portfolios having one type of characteristic for assets or portfolios having a different type of characteristic. Typically, the investment strategy of an investment fund will become more conservative as it approaches maturity and the distribution of cash among the assets or the mix of portfolios reflects that change in the fund.

FIG. 1 graphically depicts an exemplary investment fund structure embodying the present invention. As shown, a plurality of investment funds F_n are made available to individual investors. Each fund has an associated time horizon H_t , which indicates the date that the individual investor anticipates receiving money from the fund. The time horizon H_t preferably is expressed in terms of a specific calendar date for maturity. Also associated with each fund F_n is a length to horizon L_H which represents the remaining time between the present and the time horizon H_t .

In an alternative embodiment, each fund F_n also may have an associated risk value R , representative of whether the fund generally represents a conservative or aggressive investment strategy. The risk R of a fund F_n provides individual investors with information about the fund to assist tailoring their investments in accordance with their own risk preferences. In another embodiment, an individual investor may impose other constraints for a particular fund, such as designation of allowable investments. For example, an investor may designate that an investment should consist only of domestic investments, or an investment should contain a predominant portion of investments directed to a specified technology or industry. In this manner, some funds of a specific time horizon H_t may be established which are tailored in accordance with investor-specified attributes.

A relationship may be established between one or more investment portfolios P_m and each investment fund F_n . The portfolio P_m has an associated portfolio characteristic, or parameter, that may be predetermined either by the fund manager, the market, or by the individual investor. The portfolio characteristic typically is determined by or defines the type of assets constituting the portfolio. These assets may be characterized by such factors as the expected volatility of the investments, the expected responsiveness to market conditions, and expected return on the investments. Thus, an investment fund F_n having a particular time horizon H_t typically consists of several portfolios, each portfolio having a different characteristic. Alternatively, a relationship is established between one or more investment assets A_k , without the use of a portfolio. In that embodiment, each investment asset A_k is handled in a manner similar to a portfolio P_m .

The portfolios P_m of FIG. 1 may each consist of one or more investment assets A_k , also called an asset mix, each representing a major asset class. These assets may be stocks, bonds, paper, currencies, gold, silver, precious metals and minerals, oil, gas and the like. Assets may be combined in a manner that achieves the predetermined portfolio characteristic.

In one embodiment, and as shown in FIG. 2, each fund F_n may include a portion or value known as present value of future cash flow P_{vf} . This portion represents a “phantom asset”, or the total value of all future cash flows that are expected to be received for the fund F_n . In that illustrated embodiment, the fund F_n has a current balance C_B representative of the current value of the portfolios (P_1 – P_5), including any cash available for investing. Available cash is removed from the P_{vf} as it becomes available for investing in the portfolios of the particular fund F_n .

One aspect of the present invention is maintaining a total fund balance, including P_{vf} and C_B , of a particular fund, while changing the investment mix of that fund over the time horizon for that fund. One way in which the present system may administer the investment funds, each fund having a fixed time horizon, is to adjust the investment mix in accordance with some identified criteria.

In one embodiment of the invention, and as illustrated in FIG. 2, the investment mix is adjusted by adjusting the percentage of available cash distributed among the portfolios P_m in each fund F_n . As shown, cash initially is invested in the portfolios P_1 – P_5 in accordance with a certain percentage. In the illustrated embodiment, P_1 has a relatively high-risk characteristic, whereas P_5 has a relatively low-risk characteristic. While the fund is young, i.e., the P_{v_f} (60%) is greater than the cash balance C_B (40%), the individual portfolios have a greater relative percentage of cash invested in the higher-risk portfolios P_1 and P_2 . Over the maturity of the fund, the cash is distributed among the portfolios such that near the time horizon for the fund, the portfolios have a greater relative percentage of value invested in the lower-risk portfolios P_4 and P_5 .

In a preferred embodiment, the change in distribution of available cash varies as a function of a risk tolerance R_f which changes over the length to horizon L_{Hf} as previously described. Other processes that consider the time horizon of the fund may be used in conjunction with the present system.

In another embodiment, the portfolio mix or asset mix for a given fund is adjusted as a function of the length to horizon L_{Hf} by exchanging individual ones of the portfolios P_m or investment assets A_k for portfolios or investment assets having different characteristics. Typically the exchange is between portfolios or assets having higher-risk characteristics for ones having lower-risk characteristics. As with the illustrated embodiment of FIG. 2, these changes may be made as some function of the time horizon L_{Hf} and risk tolerance R_f , depending on the particular system.

FIG. 3 shows a block diagram of software and hardware components for implementing one embodiment of the present invention 100. Processor 102 is a conventional engineering workstation or other computer processor such as an Intel 80x86 or Pentium central processing unit (CPU), Motorola 680x0 CPU, RISC CPU and the like. Processor 102 may also be coupled to other processors accessible over conventional communications channels or buses (not shown). Processor 102 is conventionally coupled to storage 104 which may be a magnetic disk storage, a CD storage unit, or other conventional computer data storage unit. Storage 104 may also be coupled to other storage units accessible over conventional communications channels or buses (not shown).

Processor 102 is also conventionally coupled to memory 108 which is a random access memory (RAM) unit or other conventional computer memory. Items in memory 108 may alternatively be stored in storage 104 and accessed by processor 102 when required. Memory 108 may comprise a fund database 110 for storage and retrieval of information related to various funds (e.g., H_f , L_{Hf} , C_B , P_{v_f} , Risk Tolerance R_f , and portfolios P_1 – P_m), investor database 112 for storage and retrieval of information related to various investors (e.g., risk preference; preferences or constraints on investments such as domestic investments only, environmentally conscious investments, technology areas of investment, or industry areas of investment), and a strategic investment module or program component 114 as discussed below. Strategic investment program comprises a plurality of program instructions executable on processor 102.

Input 101 comprises conventional input devices such as a keyboard, mouse, track-ball, or touchscreen. A conventional display unit 120 may also be conventionally coupled to processor 102.

The preferred embodiment of the present invention may be implemented on any platform, operating system, and user

interface such as: IBM PC or Compatibles/Microsoft Windows; Sun/Sun OS-SunView; DEC VAX/VMS, and the like, and may be operated in a distributed data/distributed processor environment, if desired.

FIG. 4 is a flow chart of one embodiment of the initialization process of the present system. One or more investment funds F_n are established 502 and stored 504 in storage 104. A time horizon H_f and a length to horizon L_{Hf} are associated 506 with each of the stored investment funds F_n , and the data F_n , H_f , L_{Hf} are stored 510 in storage 104. At the same time, or at a separate time, one or more investment assets A_k may be established 512 and stored 514 in storage 104. These assets A_k represent real tangible assets such as stocks, bonds, paper, currencies, gold, silver, precious metals and minerals, oil, gas and the like, which are bought on the market in order to establish the fund. Alternatively, step 512 may include establishing a portfolio P_m having one or more assets A_k .

Each fund, F_n , is associated with one or more assets, A_k (or P_m) 516, and stored 518 in storage 104. Cash or other contributions can then be directed 520 to the various investment assets A_k (or portfolios P_m) associated with each fund F_n and distributed among the assets A_k (or portfolios P_m) as a function of the length to horizon L_{Hf} associated with each fund F_n , as described in detail above. The initial distribution 520 of cash among the investment assets A_k or portfolios P_m establishes the investment mix, of each fund F_n . It is this investment mix that is adjusted 522 in accordance with some predetermined criteria, as described in further detail below, which criteria also is a function of the length to horizon L_{Hf} associated with the fund F_n .

In a preferred embodiment, the investment mix of a fund F_n is adjusted 522 as a function of the risk R_f , where R_f varies with the length to horizon L_{Hf} associated with the fund F_n . By associating the time horizon H_f (or L_{Hf}) with a risk level or preference indicator, such as R_f , it is possible to decrease the amount of risk in investments over the life of a particular fund. For example, a fund F_1 that has an H_f of 40 years may have an initial investment mix that has high expected risk because the investor has high risk tolerance R_f . Conversely, a fund F_2 may have an associated H_f of 10, in which the R_f is quite low, leading to conservative investment mix. The risk of the fund is conventionally determined by statistical variance analysis or fluctuation of the fund in relation to the market.

In practicing a preferred embodiment of the present invention, and as shown in FIGS. 5A–5D, once a fund F_n is established, the risk tolerance R_f shifts over time without transferring any cash out of the fund. The illustrated fund F_n has a time horizon H_f of 40 years. In the first year, FIG. 5A, the R_f is high, thus the investment mix will reflect the aggressive investment approach. The investments mix is thus proportionately in higher-risk funds. Over time, as L_{Hf} diminishes, the R_f shifts and the investment strategy becomes more risk averse, as illustrated in FIG. 5B. Continuing, the R_f decreases until a more conservative, or less aggressive, investment mix is achieved, as illustrated in FIGS. 5C and 5D. The investments mix is thus proportionately in lower-risk funds.

FIG. 6 is a general flow chart of a preferred embodiment of practicing the adjusting step 522 of the present invention. In the illustrated embodiment, information is obtained 700 from an individual investor regarding investor portfolio information and market data 800 is obtained regarding the market. The step of obtaining 700 investor portfolio information includes establishing a current portfolio 702, which

becomes the repository for assets and cash. Investor assumption data, such as investment preferences (domestic limitation, technology focus, industry focus, environment conscious, and the like) may also be obtained **704**.

The step of obtaining **700** investor portfolio information also includes obtaining **706** risk tolerance data. Such data includes both the investor policy risk tolerance, which typically is a measure of an aggressive/conservative investment policy on behalf of the investor, and a market response coefficient, which typically is a measure of whether the investor is generally contrary, market neutral, or insurance oriented. A risk tolerance R_f is determined **708**, which is used in determining **812** portfolio risk, described in further detail below.

Finally, the step of obtaining **700** investor portfolio information may include obtaining **710** contribution data. That data may include such factors as the investor's current salary, expected growth rate of that salary, the investor's contribution rate, any matching funds contributed by a third source, the investment horizon H_p , plus any outstanding or current fund balance. Other factors may be included or omitted as appropriate for an individual investor or system. Each of these factors may be used, in combination or individually, to calculate **712** the anticipated cash flow stream for the investor.

The step of obtaining **800** market data preferably includes the steps of obtaining **802** interest rate data and obtaining **804** other market data. The step of obtaining **802** interest rate data may include calculating **806** some discount function that then may be used, in combination with the anticipated cash flow stream produced in step **712**, to determine **808** the present value of future cash flow $P_{v,p}$ in the form of future cash flows.

The step of obtaining **804** other market data may include determining market risk premiums, expected returns, and transaction costs associated with buying/selling portfolios and/or individual assets, which may include obtaining alphas for each portfolio and/or each asset. An alpha is defined as the difference between the investor's expected return and the observed market consensus expected return for any particular portfolio or asset. Other values may be obtained **804** as appropriate for the particular system and investors. The market data may be used to forecast **810** market risks and returns, and to determine **812** the portfolio risk.

The fund then is optimized **900** in accordance with any commercially available optimizer program or system, such as AAT, available from Scientific Press (So. San Francisco, Calif.). Inputs to an optimizer program **900** typically include a lower bound, which may be set to be that portion of the portfolio which represents the present value of all future contributions to the portfolio by the investor, or set in accordance with the investors' desired minimal exposure to an asset class or portfolio. Optimizers **900** typically also include an upper bound, which represents a maximum exposure that any investor wishes to have to one or more asset classes or portfolios. Other inputs of available optimizers typically include: asset and/or portfolio characteristics, such as expected returns risks, and correlations; transactions costs of all types; current holdings; and investor risk tolerance. Other parameters may be considered or omitted, depending upon the particular optimizer used in conjunction with the present invention.

The present system may further include creating **902** an investor trade list. The trade list may be in the form of output from the optimizer **900**, and lists the assets that need to be

exchanged to obtain an optimal mix of investments. The investor portfolio may then be rebalanced **904** by trading, selling and/or purchasing assets in the open market, then maintained **906** for a specified period, such as for one month. Typically, trade lists are a necessary part of the process even when trading activity is motivated by contributions or withdrawals of cash.

FIG. 7 illustrates a high-level flowchart of one embodiment of the investment management module **114** shown in FIG. 3. Current asset classes **701** for a fund are input to the system for processing. In a preferred embodiment, **17** asset classes **701**, or style indices (which represent assets), are input as shown in Table I. Asset classes represent tangible commercial assets or goods such as bonds, stocks, money markets, currencies, cash, gold, silver, oil, gas, or other precious metals and minerals. As the investment mix changes according to the present investment, these goods are physically purchased or disposed of. Asset classes and style indices are used interchangeably herein.

TABLE I

Domestic Equity
Large Growth (Equity Growth)
Intermediate Value
Intermediate Growth
Intermediate Utilities
Small Value
Small Growth
Micro
International Equity
MSCI EAFE x-Japan*
MSCI Japan
Domestic Fixed Income
Intermediate Government
Long Government
Intermediate Corporate
Long Corporate
Mortgage Backed Securities
International Fixed Income
Salomon non-US WGBI*
Cash
Treasury Bills (MOEBT*)

*MSCI EAFE = Morgan Stanley Capital International Europe, Australia and Far East Index
 MOEBT = Well Fargo money market fund
 WGBI = World Government Bond Index

The domestic equity style indices are a mutually exclusive and exhaustive set of style indices which combine (using capitalization weights) to form the US Equity Market Index. The domestic fixed income style indices are a mutually exclusive and exhaustive set of style indices which combine (using capitalization weights) to form the Lehman Brothers Aggregate Bond Index (minus asset backed securities). The international equity style indices combine to form the MSCI EAFE Index. The international fixed income index forms the Salomon Brothers non-U.S. WGBI. The final asset class is cash. Other similar asset classes or style indices **701** can also be used. It is assumed that expected returns, risks, and correlations of asset classes **701** change infrequently, and the markets are in equilibrium.

A strategic investment strategy is determined **703**, which produces strategic asset class weights **705** for each asset class **701**. In one embodiment, the strategic component **703** represents 75% of the overall investment strategy of a fund (e.g., 75% of incoming cash or other investment is invested strategically), however this percentage can be modified as

desired. Determination of the strategic asset class weights **705** is discussed below with reference to FIG. **8**.

Strategic asset class weights **705** are used to modify **711** the mix of assets in a fund **713** to produce a modified asset mix for a fund **715**. Based on this modified asset mix **715**, assets in the fund are bought or disposed of on the open market to conform to the strategic asset mix **705**. New investments coming into the fund (e.g., cash, contributions, electronic funds) are also allocated according to the strategic asset mix **715**. The strategic investment component (**701**, **703**, **705**) can be repeated in order to process a plurality of funds.

Strategic asset class weights **705** are used to determination a tactical investment strategy **707**. In one embodiment, the tactical component **707** represents 25% of the overall investment strategy of a fund (e.g., 25% of incoming cash or other investment is invested tactically), however this percentage can be modified as desired. The tactical investment component can be repeated in order to process a plurality of funds. The tactical component **707** is optional. Determination of tactical investments **709** is discussed below with reference to FIG. **9**.

FIG. **8** is a flowchart illustrating the determination of the strategic asset class mix weights **703**. A correlation matrix is conventionally determined **803** for the asset classes in a fund **701** (e.g., assets listed in Table I). In one embodiment, the monthly returns (equal weighted) for the previous ten calendar years (120 months) of each asset class **701** are used to determine a conventional correlation matrix **803**. In a preferred embodiment, correlation matrix **803** is updated on an annual basis.

The risk of each asset class **701** is conventionally determined **805** using the standard deviation of the monthly returns (equal weighted) for the previous ten calendar years (120 months) of the asset class **701**. In a preferred embodiment, the risk estimates **805** are updated on a quarterly basis.

Implied expected returns for each asset class are determined **807** conventionally using zero beta CAPM (Capital Asset Pricing Model). Given the expected risk **805** of each asset class, the correlation matrix **803**, an efficient portfolio **809**, and the expected returns on two asset classes (E_1 , E_2) **811**, **813**, the implied expected returns, E_i , for each asset class **701**, i , can be calculated as follows:

$$E_i = z + \beta_i * p$$

where

E_i = the expected return of asset class i

β_i = the beta of asset class i

$p = (E_1 - E_2) / (\beta_1 - \beta_2)$ and

$z = E_1 - \beta_1 * p$

β_i for all i classes **701** is known from the covariances and variances of each asset class in the correlation matrix **803**. In one embodiment, the expected return of one known asset class, E_1 , can be estimated using a conventional dividend discount model (DDM is the consensus expected dividend to calculate the expected return of the security) and attributing it to the Large Value asset class. The second known expected return, E_2 , can then be estimated using the average historical spread between stocks and bonds to determine an estimate of the equilibrium spread between stocks and the Long Governments asset class. For example, if the historical spread is 3.00%, the expected return for the Long Government asset class is equal to the expected return for the Large Value asset class minus 3.00%.

A proxy for an efficient portfolio **809** is the average strategic asset mix of several (e.g., twelve) large defined

benefit plans (e.g., with combined total assets of \$250 billion) sampled annually. It is assumed that these plans are a good proxy for a sophisticated investor. At the broad asset class category level (see Table I categories of asset classes) this 'sophisticated investor' efficient portfolio mix as of Dec. 31, 1993 was 51.1% domestic equity, 19.3% international equity, 27.3% domestic bonds and 2.3% international bonds. Within the domestic asset classes (equity and bonds) these broad asset classes are sub-divided into the asset classes **701** based on relative market capitalization. For international equity, the relative weights are 75% EAFE ex-Japan and 25% Japan to reflect the underweighting (relative to market-capitalization) of Japan in US institutional equity portfolios. It is estimated that 20% of international equity exposure is indexed and 80% is actively managed. Using a market capitalization weighting of 45% for the indexed component and a weighting of 20% for the average active equity manager, the Japan weighting is 25% for the average US institutional investor.

Given the inputs of an asset class correlation matrix **803**, asset class risks **805**, and asset class expected returns **807**, an efficient frontier **815** is conventionally determined using a mean/variance optimizer. The efficient frontier **816** represents the optimal mix of a given set of asset classes for any given desired risk, R , of investment. Each point on efficient frontier **815** represents a portfolio or mix of assets whose expected return is the highest for that given level of risk. A commercially available product, such as Ibbotson Associates' EnCORR/Optimizer can be used to calculate efficient frontier **815**.

In a preferred embodiment, constraints **817** on selected asset classes can be imposed during the calculation of efficient frontier **815** such that an optimal class weight mix does not recommend more than a specified percent of the selected asset class. Asset class constraints **817** are generally only implemented in the strategic investment strategy component. For example, in a preferred embodiment, an international constraint is imposed so that no more than 26% (0.26 weight) is allocated to international assets, and, no more than 15% (0.15 weight) is allocated to cash:

international constraint:

$$w_{\text{Japan}} + w_{\text{EAFE-ex Japan}} + w_{\text{intl bonds}} \leq 0.26 \text{ (26\%)}$$

cash constraint:

$$w_{\text{cash}} \leq 0.15 \text{ (15\%)}$$

Before, after or during the calculation of the efficient frontier **815**, the optimal risk level, R_p , **820** is determined **819**. As discussed above with reference to FIGS. **5A-5D**, the risk level, R_p , generally decreases as a function of L_H the length of time remaining between the present time and the time horizon H , **821**. If returns are independent across time, then risk (standard deviation annualized) will change with the square root of time.

$$R_p = \sqrt{L_H} * F$$

where L_H = time in years to the maturity of the fund (**821**), and F = a constant risk factor (**823**). The constant risk factor, F , **823** is determined such that the recommended mix is 100% equity allocated across several domestic and international equity asset classes at the beginning of a fund (e.g., $L_H = 50$); and the allocation is 20% equities at the mature state (e.g., $L_H = 0$ or $L_H = 4$). In one embodiment, $F = 2.15$. If

11

asset class risk levels or final desired allocations change then F should be adjusted.

In one embodiment L_H 821 is equal to 50 at the inception of a fund, and for the mature state it is assumed to be 4 years. This is to ensure that the allocation at the mature state has approximately 20% equities. Thus,

$$R_1 = \sqrt{L_H} * F \quad \text{for } L_H = 50 \text{ to } 5$$

$$R_1 = \sqrt{(5 - ((5 - L_H) / 5))} * F \quad \text{for } L_H < 5$$

The strategic asset class mix or weights 705 for a given fund is determined 825 by finding the mix on the efficient frontier 815 corresponding to the optimal risk level, R_f , 819 for the fund. In one embodiment, strategic asset class weights 705 are modified such that the strategic component of the process (703, 705) accounts for a given percent of the overall investment strategy for a fund, e.g., 75 percent in a preferred embodiment. This step is accomplished conventionally by multiplying the strategic asset class weights by a factor less than 1 (e.g., 0.75).

FIG. 9 is a flowchart illustrating the determination of the tactical investment strategy 707. The tactical component 707 is designed to improve the fund performance by taking advantage of relative mis-pricing across asset classes. Markets are not assumed to be in equilibrium, and expected returns are updated daily. In one embodiment, a certain proportion of investments directed to a fund represent tactical investments, e.g., 25% in a preferred embodiment. The tactical component 707 is used to determine how to invest the 25%.

In one embodiment, the tactical investment component 707 of a fund is divided between two commercially available allocation strategies—the Wells Fargo U.S. Tactical Asset Allocation (100/0/0, stocks/bonds/cash, in normal market conditions) and the Wells Fargo U.S. Treasury Asset Allocation (bonds, notes, cash). The strategic asset class weights 705 are used to determine 901 how much should be invested according to the Tactical Asset Allocation 903, and how much should be invested according to the Treasury Asset Allocation 905. In this embodiment, the percent of strategic asset class weights 705 allocated to equities (e.g., the weights allocated to asset style indices or asset classes under the Domestic Equity and International Equity categories, plus Intermediate Corporate, Long Corporate, Mortgage Backed Securities, and Cash—see Table I above) is invested according to the Tactical Asset Allocation 903, while the percent of strategic asset class weights allocated to non-equities (e.g., (100- % equity) or the percent in International Fixed Income, Intermediate Government, Long Government, and Salomon non-US WGBI—see Table I above) is invested according to the Treasury Asset Allocation 905.

The Tactical Asset Allocation comprises the following indexes for given asset class categories:

Asset Class	Index
Stocks	S&P 500 Index
Bonds	Lehman Brothers 20+ Treasury Bond Index
Cash	MOEBT

12

The U.S. Treasury Asset Allocation strategy comprises the following indexes for given asset class categories:

Asset Class	Index
Bonds	Lehman Brothers 20+ Treasury Bond Index
Notes	Lehman Brothers 5-7 year Treasury Index
Cash	Treasury Bills

What is claimed is:

1. A computer system for managing assets in each of a plurality of investment funds, the system comprising:

a processor for executing programmed instructions and for storing and retrieving data;

program memory, coupled to the processor, for storing program instructions for execution by the processor;

an output device, coupled to the processor, for displaying data;

an input device, coupled to the processor, for accepting input data associated with each investment fund for storage in the memory, including:

a time horizon for each investment fund, and

an actual investment mix among the assets in each investment fund; and

an investment program, stored in the memory and executable on the processor, for automatically and periodically:

determining for each investment fund a current risk level for the investment fund as a function of the time horizon and a current date, the current risk level determined by:

$$R_f = \sqrt{L_H} F \quad \text{for } T_1 < L_H \leq T_2$$

$$R_f = \sqrt{\left(T_1 - \frac{T_1 - L_H}{T_1} \right) F} \quad \text{for } L_H \leq T_1$$

where R_f is the current risk level;

L_H is a length of time to the time horizon;

F is a constant risk factor selected for a predetermined maximum amount of risk; and

T_1 and T_2 are times;

determining a risk adjusted asset mix for each investment fund as a function of the current risk level, and modifying the investment mix of each investment fund as a function of the risk adjusted asset mix.

2. The system of claim 1, wherein the asset mix is a strategic asset mix limited to assets for markets assumed to be in equilibrium, further comprising:

a tactical investment program, stored in the memory and executable on the processor, for:

determining a tactical investment mix for the fund as a function of the strategic asset mix, the tactical investment mix consisting of assets for markets assumed to not be in equilibrium; and

modifying the investment mix of the fund as a function of the tactical investment mix.

3. A computer implemented method for managing assets in an investment fund using a computer comprising a processor, storage, and a memory, the method comprising the steps of:

establishing, via the processor, an investment fund, the investment fund having an actual asset allocation including a plurality of assets, a time horizon defining

13

a maturity date for the investment fund, each asset in the asset allocation being a member of an asset class, each asset class having an asset class weight;
 periodically determining, via the processor, a current risk level for the investment fund as a function of the time horizon and a current date, the current risk level determined by:

$$R_t = \sqrt{L_H F} \quad \text{for } T_1 < L_H \leq T_2 \quad 5$$

$$R_t = \sqrt{\left(T_1 - \frac{T_1 - L_H}{T_1}\right) F} \quad \text{for } L_H \leq T_1 \quad 10$$

where R_t is the current risk level;
 L_H is a length of time to the time horizon;
 F is a constant risk factor selected for a predetermined maximum amount of risk; and
 T_1 and T_2 are times;
 periodically determining, via the processor, a risk adjusted asset allocation for the investment fund by determining a current asset weight for each asset class in the asset allocation as a function of the current risk level; and

purchasing or disposing of assets in each asset class of the fund to match the actual asset allocation of the investment fund to the risk adjusted asset allocation of the investment fund.

4. The method of claim 3 wherein the asset classes include equity asset classes and income asset classes, and determining the current risk level further comprises:

determining the current risk level as a function of a risk factor, the risk factor allocating a majority of the assets in the risk adjusted asset allocation to the equity asset classes when the time horizon is greater than a first predetermined amount of time, and allocating a majority of the assets in the risk adjusted asset allocation to the income asset classes when the time horizon is less than a second predetermined amount of time, where the first predetermined amount of time is greater than the second predetermined amount of time.

5. The method of claim 3, wherein the step of periodically determining, via the processor, a risk adjusted asset allocation further comprises:

constraining the asset weight of at least one asset class to being less than a predetermined percentage of a total of the asset weights for all asset classes in risk adjusted asset allocation.

6. The computer-implemented method of claim 3 wherein there are a plurality of investment funds, the method further comprising:

periodically and regularly repeating all steps for each investment fund.

7. The computer-implemented method of claim 3 further comprising the steps of:

allocating a first portion of the actual asset allocation to a strategic investment component limited to asset classes for markets assumed to be in equilibrium;

allocating a second, remaining portion of the actual asset allocation to a tactical investment component limited to asset classes for markets assumed to not be in equilibrium, the tactical investment component having at least an equity asset allocation and an income asset allocation;

14

determining, via the processor, an adjusted tactical investment allocation within the tactical investment component by:

allocating to the equity asset allocation a first portion of the tactical investment component corresponding to a portion of the strategic investment component allocated to equity asset classes; and

allocating to the income asset allocation a second portion of the tactical investment component corresponding to a portion of the strategic investment component allocated to income asset classes; and

purchasing or disposing of assets in the tactical investment component to match the adjusted tactical investment allocation.

8. The computer-implemented method of claim 7 wherein there are a plurality of investment funds, the method further comprising:

periodically and regularly repeating all steps for each investment fund.

9. The method of claim 7 wherein the asset classes include equity asset classes and income asset classes, and the step of determining the current risk level further comprises:

determining the current risk level as a function of a risk factor, the risk factor allocating a majority of the assets in the strategic investment component to the equity asset classes when the time horizon is greater than a first predetermined amount of time, and allocating a majority of the assets in the strategic investment component to the income asset classes when the time horizon is less than a second predetermined amount of time, where the first predetermined amount of time is greater than the second predetermined amount of time.

10. The computer-implemented method of claim 7 wherein the step of determining a tactical investment allocation comprises:

allocating E percent of the assets of the tactical investment component to the equity asset allocation, where E is equal to a percent of the strategic asset allocation allocated to equity asset classes; and

allocating (1-E) percent of the assets of the tactical investment component to the income asset allocation.

11. The computer-implemented method of claim 3 further comprising the steps of:

distributing a second, remaining portion of the assets to a tactical investment component limited to asset classes for markets assumed to not be in equilibrium, the tactical investment component having at least an equity asset allocation and an income asset allocation;

determining, via the processor, an adjusted tactical investment allocation for the fund by:

allocating to the equity asset allocation E percent of the tactical investment component corresponding to a percent of the strategic investment component allocated to equity asset classes; and

allocating to the income asset allocation (1-E) percent of the tactical investment component to the income asset allocation;

modifying, via the processor, the investment mix of the fund as a function of the tactical investment mix; and

purchasing or disposing of assets in the tactical investment component to match the adjusted tactical investment allocation.

12. A computer implemented method for managing a plurality of investment funds, each investment fund having a time horizon defining a maturity of the investment fund, and an actual investment allocation of the assets in the investment fund, the method comprising:

15

automatically and periodically determining for each investment fund a risk level for the investment fund as a function of its time horizon and a current date, the risk level determined by:

$$R_f = \sqrt{L_H F} \quad \text{for } T_1 < L_H \leq T_2$$

$$R_f = \sqrt{\left(T_1 - \frac{T_1 - L_H}{T_1}\right) F} \quad \text{for } L_H \leq T_1$$

where R_f is the risk level;
 L_H is a length of time to the time horizon;
 F is a constant risk factor selected for a predetermined maximum amount of risk; and
 T_1 and T_2 are times;

automatically and periodically computing a risk adjusted asset allocation for the assets of each investment fund as a function of the risk level; and

modifying the actual investment allocation of each investment fund to match the risk adjusted asset allocation for the investment fund.

13. The method of claim 12, wherein the step of automatically and periodically computing a risk adjusted asset allocation for each investment fund further comprises:

automatically and periodically computing a strategic asset allocation for each investment fund as a function of the risk level, the strategic asset allocation consisting of a first type of assets of the actual investment allocation in markets assumed to be in equilibrium;

automatically and periodically determining a tactical investment allocation for each investment fund as a function of the strategic asset allocation, the tactical investment allocation consisting of a second type of assets in the actual investment allocation in markets assumed to not be in equilibrium; and

modifying the actual investment allocation, of the fund by purchasing or disposing of first type assets to match the strategic investment allocation and purchasing or disposing of second type assets to match the tactical investment allocation.

14. The method of claim 13, further comprising:

determining the risk level as a function of a risk factor, the risk factor causing the strategic investment allocation to allocate a majority of the assets to the equity asset classes when the time horizon is greater than a first predetermined amount of time, and causing the strategic investment allocation to allocate a majority of the assets to the income asset classes when the time horizon is less than a second predetermined amount of time.

15. In a computer system, including a processor and a memory, an investment program stored in the memory and executable by the processor for managing assets in each of

16

a plurality of investment funds stored in the system, the investment program comprising:

an investment program that accepts a time horizon for each investment fund and an actual investment allocation among the assets in each investment fund, and that automatically and periodically:

determines for each investment fund a risk level for the investment fund as a function of the time horizon and a current date the risk level determined by:

$$R_f = \sqrt{L_H F} \quad \text{for } T_1 < L_H \leq T_2$$

$$R_f = \sqrt{\left(T_1 - \frac{T_1 - L_H}{T_1}\right) F} \quad \text{for } L_H \leq T_1$$

where R_f is the risk level;
 L_H is a length of time to the time horizon;
 F is a constant risk factor selected for a predetermined maximum amount of risk; and
 T_1 and T_2 are times;

determines a risk adjusted asset allocation for each investment fund as a function of the risk level; and

modifies the actual investment allocation of each investment fund to match the risk adjusted asset allocation.

16. A computer implemented method for managing an investment fund having a time horizon defining a maturity of the investment fund, and an actual investment allocation of the assets in the investment fund, the method comprising:

automatically and periodically determining a risk level for the investment fund as a function of the time horizon and a current date, the risk level determined by:

$$R_f = \sqrt{L_H F} \quad \text{for } T_1 < L_H \leq T_2$$

$$R_f = \sqrt{\left(T_1 - \frac{T_1 - L_H}{T_1}\right) F} \quad \text{for } L_H \leq T_1$$

where R_f is the risk level;
 L_H is a length of time to the time horizon;
 F is a constant risk factor selected for a predetermined maximum amount of risk; and
 T_1 and T_2 are times;

automatically and periodically computing a risk adjusted asset allocation for the assets of the investment fund as a function of the risk level; and

modifying the actual investment allocation of the investment fund to match the risk adjusted asset allocation for the investment fund.

* * * * *