



US007991732B2

(12) **United States Patent Error**

(10) **Patent No.:** US 7,991,732 B2
(45) **Date of Patent:** Aug. 2, 2011

(54) **INCREMENTALLY ADDING SEGMENTATION CRITERIA TO A DATA SET**

(75) Inventor: **Brett Michael Error**, Orem, UT (US)
(73) Assignee: **Adobe Systems Incorporated**, San Jose, CA (US)
(*) Notice: Subject to any disclaimer, the term of this patent is extended or adjusted under 35 U.S.C. 154(b) by 173 days.

6,008,809 A 12/1999 Brooks
6,026,397 A 2/2000 Sheppard
6,182,097 B1 1/2001 Hansen et al.
6,188,405 B1 2/2001 Czerwinski et al.
6,266,649 B1 7/2001 Linden et al.
6,310,631 B1 10/2001 Cecco et al.
6,317,787 B1 11/2001 Boyd et al.
6,393,479 B1 5/2002 Glommen et al.
6,414,677 B1 7/2002 Robertson et al.
6,473,102 B1 10/2002 Rodden et al.
6,473,738 B1 10/2002 Garrett et al.
6,486,882 B1 11/2002 Wolverton et al.

(Continued)

(21) Appl. No.: **11/313,588**

(22) Filed: **Dec. 20, 2005**

(65) **Prior Publication Data**

US 2006/0277211 A1 Dec. 7, 2006

Related U.S. Application Data

(60) Provisional application No. 60/687,626, filed on Jun. 3, 2005.

(51) **Int. Cl.**
G06F 7/00 (2006.01)
G06Q 30/00 (2006.01)

(52) **U.S. Cl.** **707/603; 705/14.6**

(58) **Field of Classification Search** 707/1-10,
707/100-104.1, 200-205, 102, 603; 709/224;
705/14.6

See application file for complete search history.

(56) **References Cited**

U.S. PATENT DOCUMENTS

5,760,772 A 6/1998 Austin
5,796,402 A 8/1998 Ellison-Taylor
5,821,931 A 10/1998 Berquist et al.
5,835,087 A 11/1998 Herz et al.
5,870,559 A 2/1999 Leshem et al.
5,966,139 A 10/1999 Anupam et al.

FOREIGN PATENT DOCUMENTS

GB 2329492 3/1999

(Continued)

OTHER PUBLICATIONS

PCT International Search Report and Written Opinion, PCT/US06/41892, Jun. 21, 2007, 12 pages.

(Continued)

Primary Examiner — Hosain T Alam

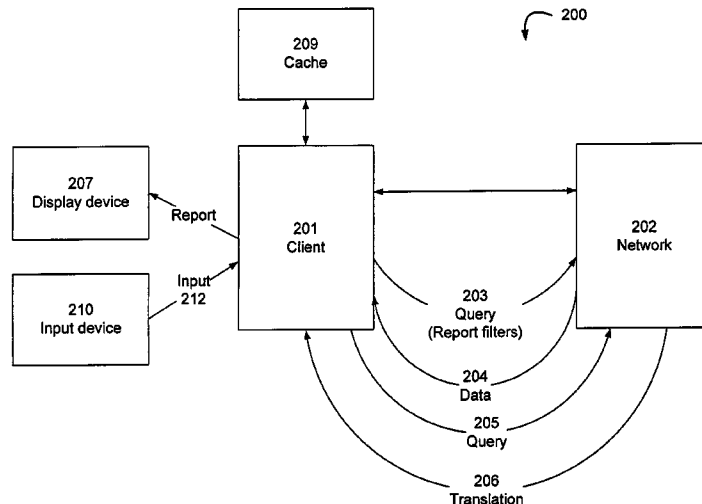
Assistant Examiner — Navneet K Ahluwalia

(74) *Attorney, Agent, or Firm* — Robert C. Kowert; Meyertons, Hood, Kivlin, Kowert & Goetzel, P.C.

(57) **ABSTRACT**

A system displays and filters reports including website visitation data in response to receiving user input. The system includes a client for processing the input as a query to a network, which returns the requested data. The system and accompanying method provide a user interface for incrementally adjusting report data and tailoring reports to user specifications. In addition, adjusted reports can be further adjusted per additional data input. The results are returned virtually instantaneously, enabling users to analyze the effects of combinations of factors.

23 Claims, 13 Drawing Sheets



U.S. PATENT DOCUMENTS

6,489,968	B1	12/2002	Ortega et al.	
6,654,036	B1	11/2003	Jones	
6,671,711	B1	12/2003	Pirulli et al.	
6,704,016	B1	3/2004	Oliver et al.	
6,754,873	B1	6/2004	Law et al.	
6,766,370	B2	7/2004	Glommen et al.	
6,789,115	B1	9/2004	Singer et al.	
6,850,988	B1	2/2005	Reed	
6,862,574	B1	3/2005	Srikant et al.	
6,912,534	B2	6/2005	DeBettencourt et al.	
6,950,993	B2	9/2005	Breinberg	
6,963,874	B2	11/2005	Kasriel et al.	
6,968,511	B1	11/2005	Robertson et al.	
6,980,962	B1	12/2005	Arganbright et al.	
7,085,682	B1*	8/2006	Heller et al.	702/186
2002/0040395	A1	4/2002	Davis et al.	
2002/0042750	A1	4/2002	Morrison	
2002/0087621	A1	7/2002	Hendriks	
2002/0091591	A1	7/2002	Tsumura et al.	
2002/0093529	A1	7/2002	Daoud et al.	
2002/0099812	A1	7/2002	Davis et al.	
2002/0143662	A1	10/2002	Clark et al.	
2002/0147805	A1	10/2002	Leshem et al.	
2002/0152284	A1	10/2002	Cambray et al.	
2002/0165936	A1	11/2002	Alston et al.	
2002/0178169	A1	11/2002	Nair et al.	
2002/0186237	A1	12/2002	Bradley et al.	
2002/0186253	A1	12/2002	Rodden et al.	
2002/0198939	A1	12/2002	Lee et al.	
2003/0023712	A1	1/2003	Zhao et al.	
2003/0025737	A1	2/2003	Breinberg	
2003/0033405	A1	2/2003	Perdon et al.	
2003/0055883	A1	3/2003	Wiles, Jr.	
2003/0110249	A1	6/2003	Buus et al.	
2003/0128231	A1	7/2003	Kasriel et al.	
2003/0131097	A1	7/2003	Kasriel et al.	
2004/0049417	A1	3/2004	Nickerson et al.	
2004/0059746	A1*	3/2004	Error et al.	707/102
2004/0133671	A1	7/2004	Taniguchi	
2004/0174397	A1*	9/2004	Cereghini et al.	345/855
2004/0190448	A1	9/2004	Fishteyn et al.	
2004/0205157	A1	10/2004	Bibelnieks et al.	
2004/0225687	A1*	11/2004	Larsson et al.	707/104.1
2005/0015376	A1	1/2005	Fraser et al.	
2005/0044508	A1	2/2005	Stockton	
2005/0204307	A1	9/2005	Nadal	
2005/0229110	A1	10/2005	Gegner et al.	
2005/0235222	A1	10/2005	Barbanson et al.	
2005/0273727	A1	12/2005	Barbanson et al.	

2006/0143162	A1	6/2006	Bernacki et al.	
2006/0212459	A1	9/2006	Sugimura	
2006/0271671	A1*	11/2006	Hansen	709/224

FOREIGN PATENT DOCUMENTS

WO	WO 00/58866	10/2000
WO	WO 00/58866 A	10/2000
WO	WO 02/23438 A2	3/2002
WO	03/105024	12/2003

OTHER PUBLICATIONS

Notification of International Search Report and Written Opinion, PCT/US04/06898, Feb. 9, 2005, 8 pages.

Notification of International Search Report and Written Opinion, PCT/US04/06696, Feb. 28, 2005, 9 pages.

Supplementary European Search Report, EP 04717485, Nov. 7, 2006, 3 pages.

Chinese Office Action, Chinese Application No. 200480034359.5, Jan. 25, 2008, 10 pages.

PCT International Search Report and Written Opinion, PCT/US06/21937, Sep. 25, 2007, 8 pages.

International Search Report and Written Opinion, PCT/US06/20550, Jun. 17, 2008, 8 pages.

U.S. Appl. No. 10/113,808, filed Mar. 29, 2002, Wiles, Jr.

U.S. Appl. No. 10/113,322, filed Mar. 29, 2002, Zhao et al.

U.S. Appl. No. 10/057,513, filed Jan. 25, 2002, Alston et al.

U.S. Appl. No. 09/835,112, filed Apr. 13, 2001, Cambray et al.

Hong, J. et al., "What Did They Do? Understanding Clickstreams with the WebQuilt Visualization System," WebQuilt homepage <http://guir.berkeley.edu/projects/webquilt/>, pp. 1-7.

Hong, J. et al., "WebQuilt: A Framework for Capturing and Visualizing the Web Experience," WebQuilt, homepage: <http://guir.berkeley.edu/projects/webquilt/>, May 1-5, 2001, pp. 1-8.

Notification of International Search Report and Written Opinion, PCT/US04/39253, Dec. 13, 2005, 13 pages.

Chinese Second Office Action, Chinese Application No. 200480034359.5, Mar. 13, 2009, 7 pages.

European Search Report from Application No. 06760453.8-1225 / 1889150 PCT/US2006020550, mailed Jul. 6, 2010, 8 pages.

Anonymous, "WebTrends Guide to Web Analytics," Internet Citation, Jan. 1, 2005, pp. I-X, 1, XP002508294.

Anonymous, "WebTrends 7 Report User's Guide," Internet Citation, Mar. 1, 2005, pp. I-VIII, 1, XP002508293.

"Webtrends: Installation and User Guide," Jan. 1, 1996, pp. A-D, 01, XP002914774.

* cited by examiner

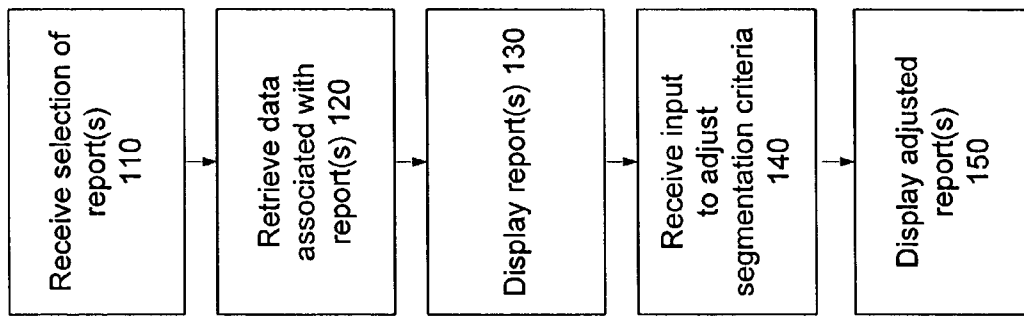


FIG. 1

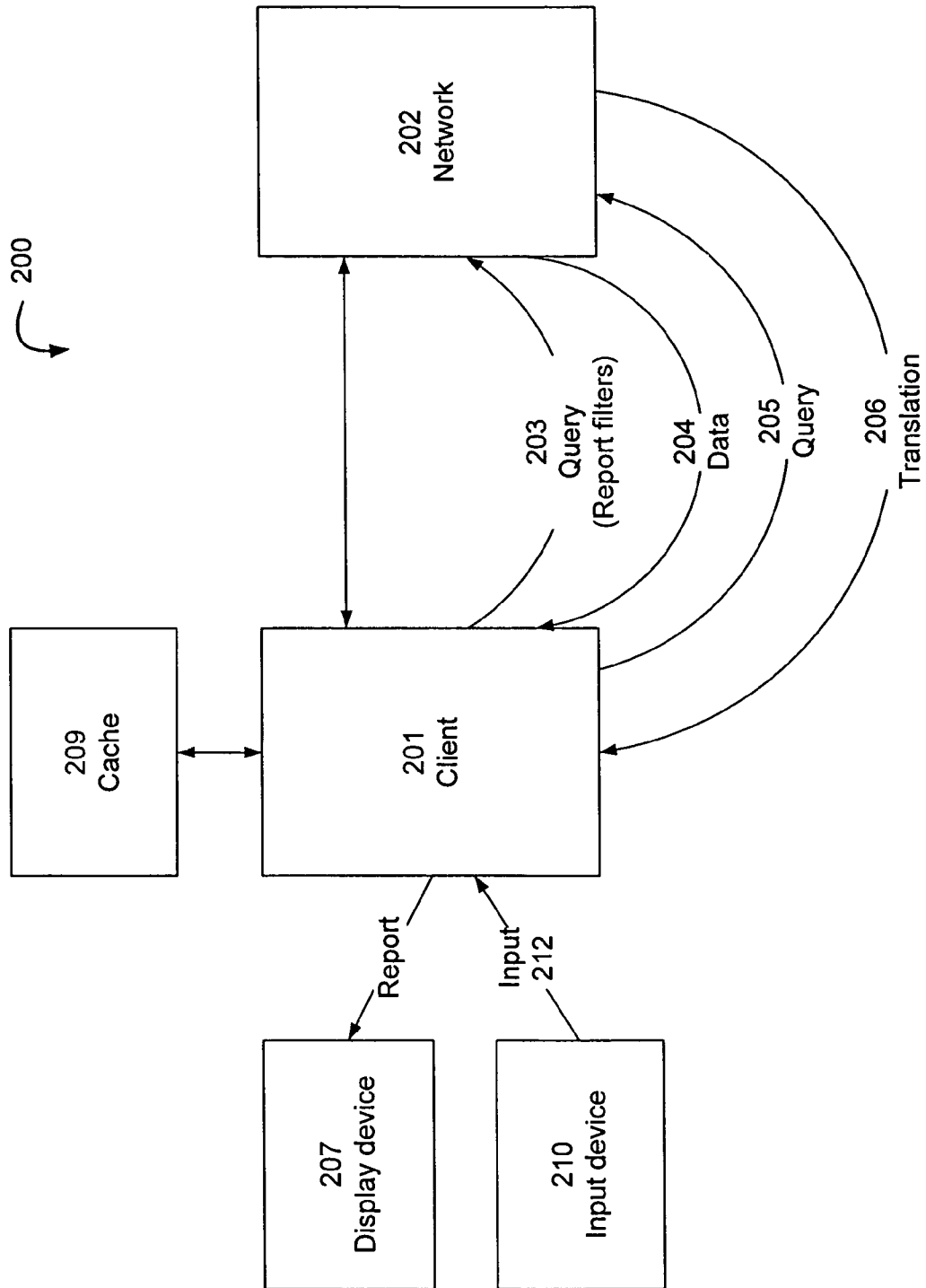


FIG. 2A

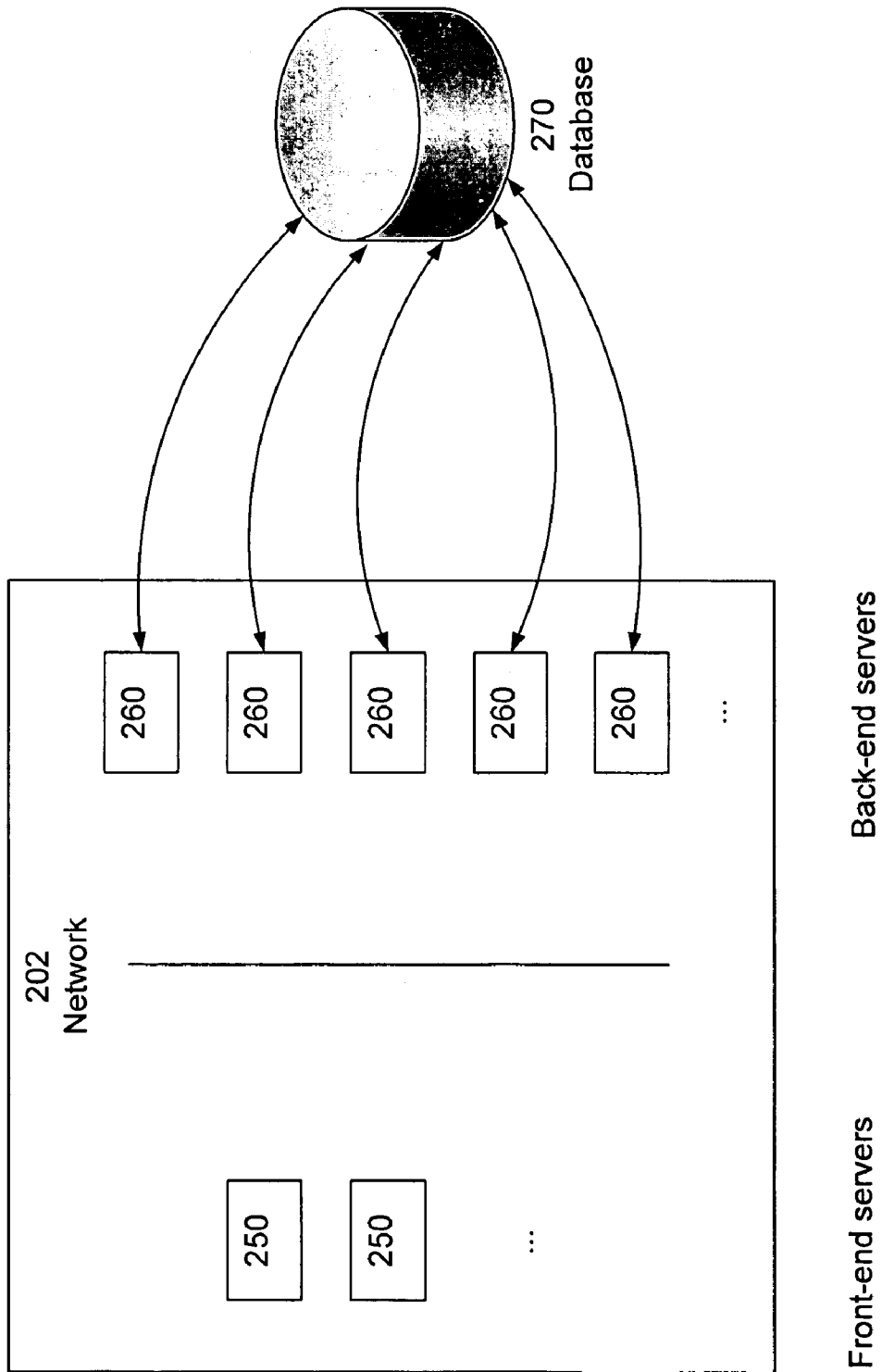


FIG. 2B

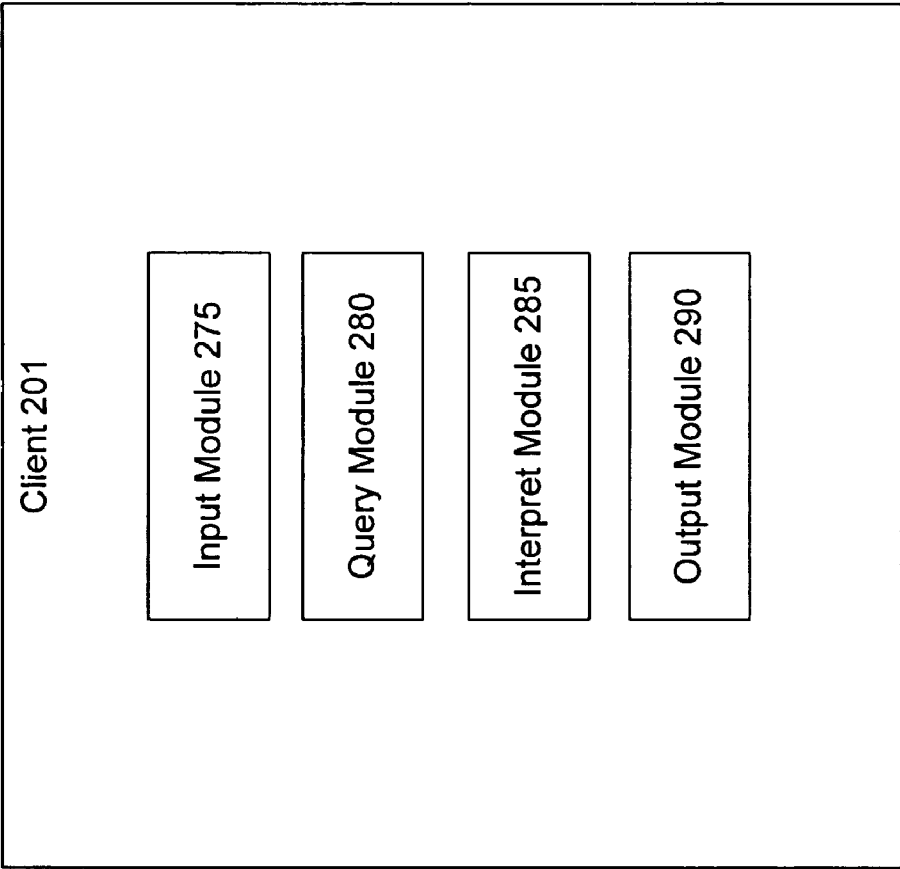


FIG. 2C

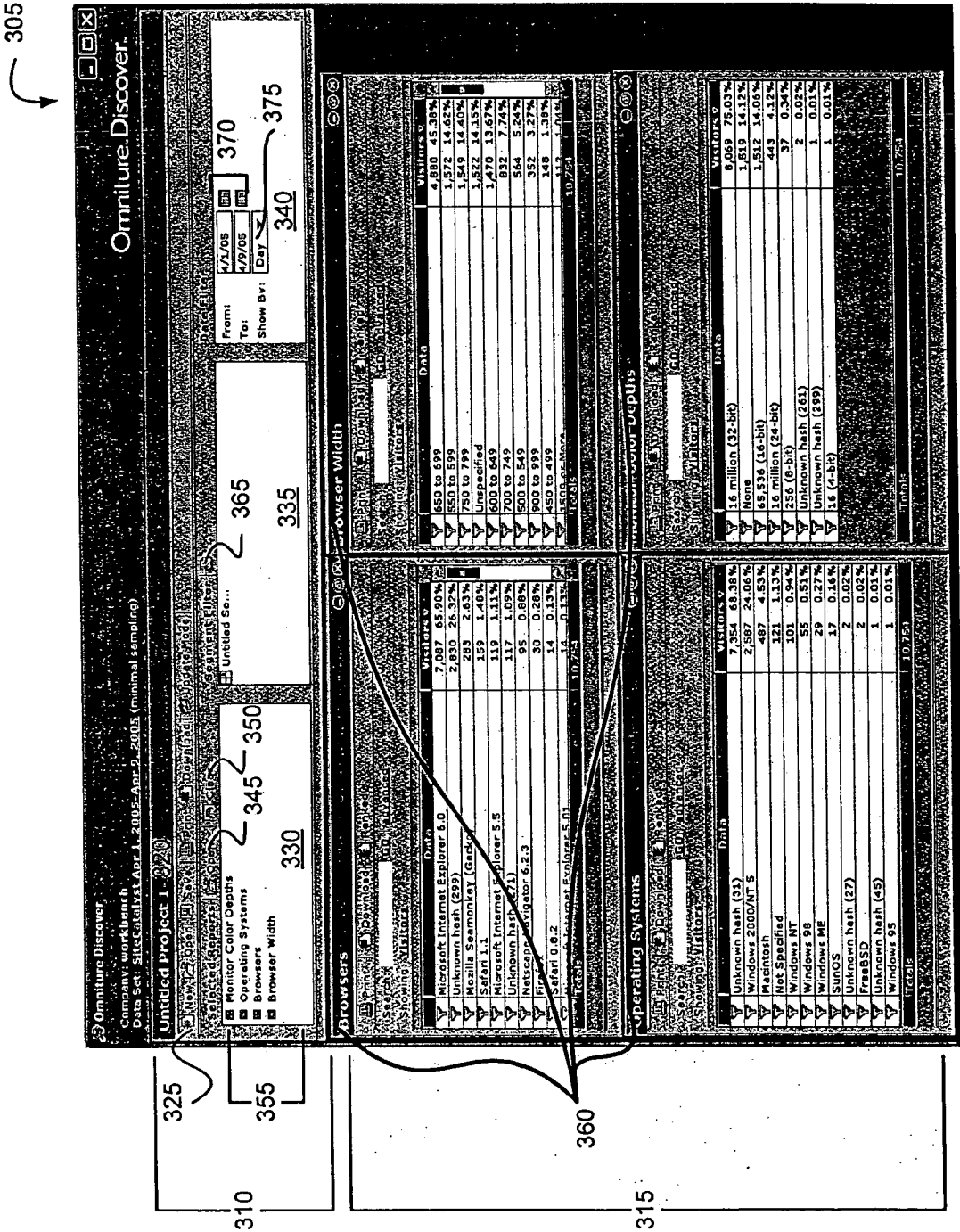


FIG. 3A

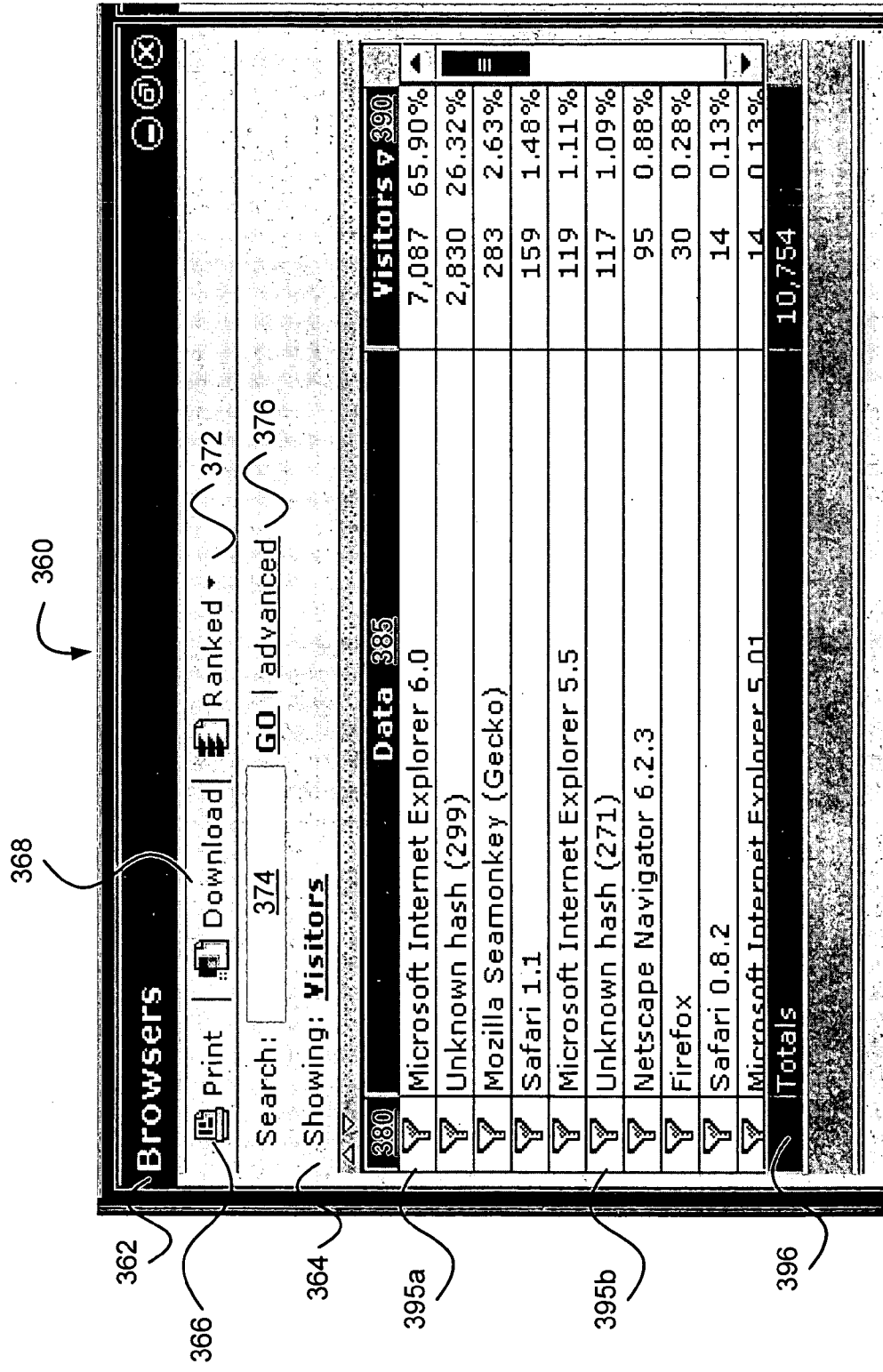
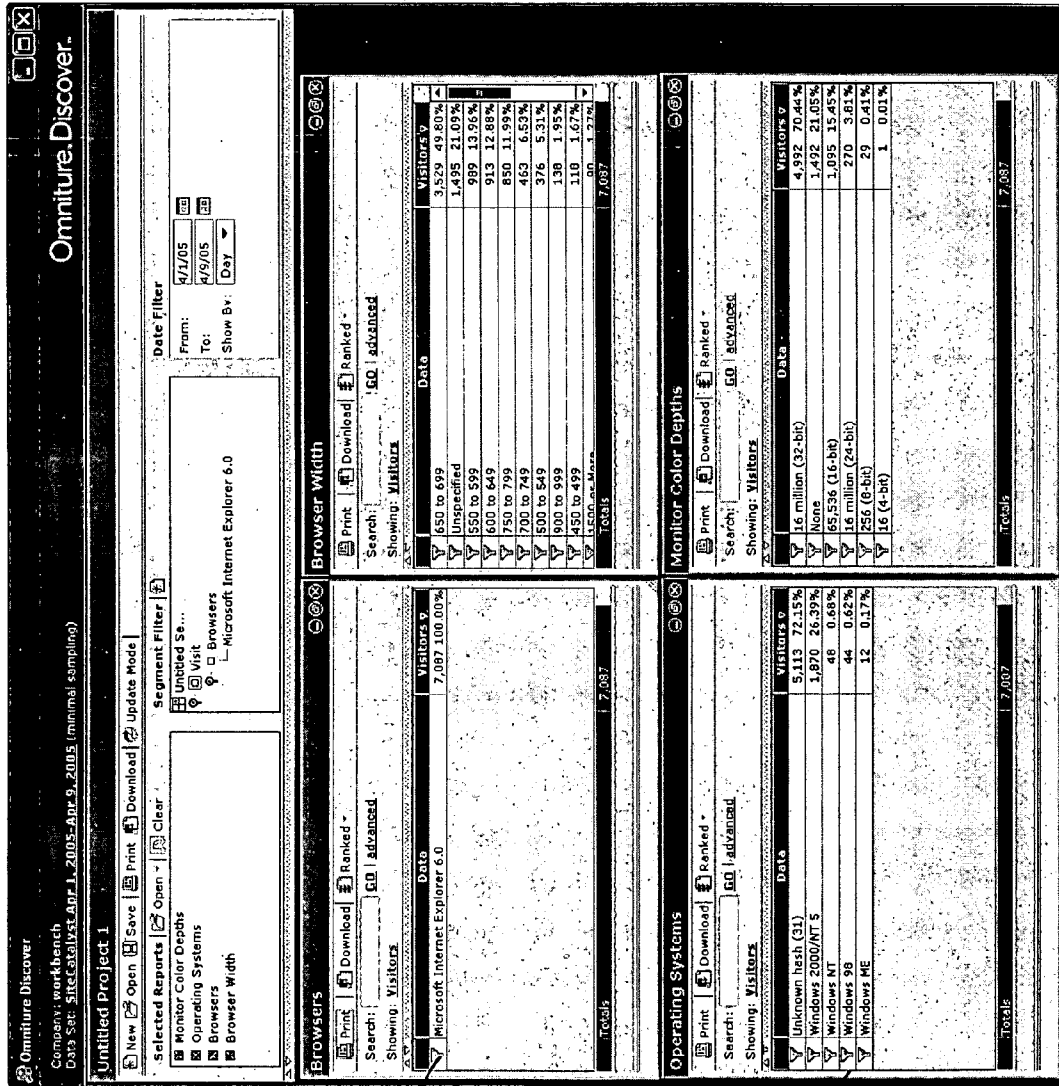


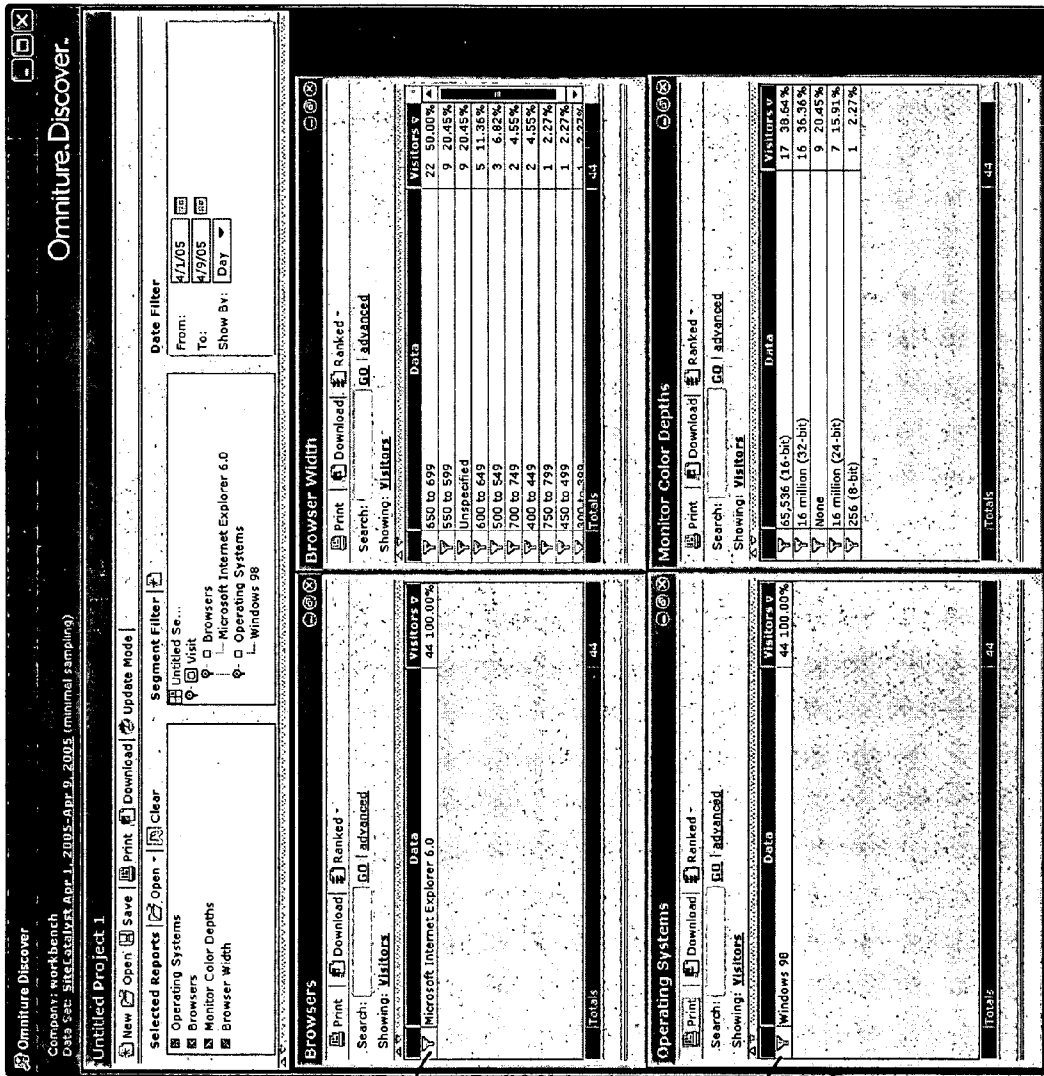
FIG. 3B



395a

395c

FIG. 3C



395a

395c

FIG. 3D

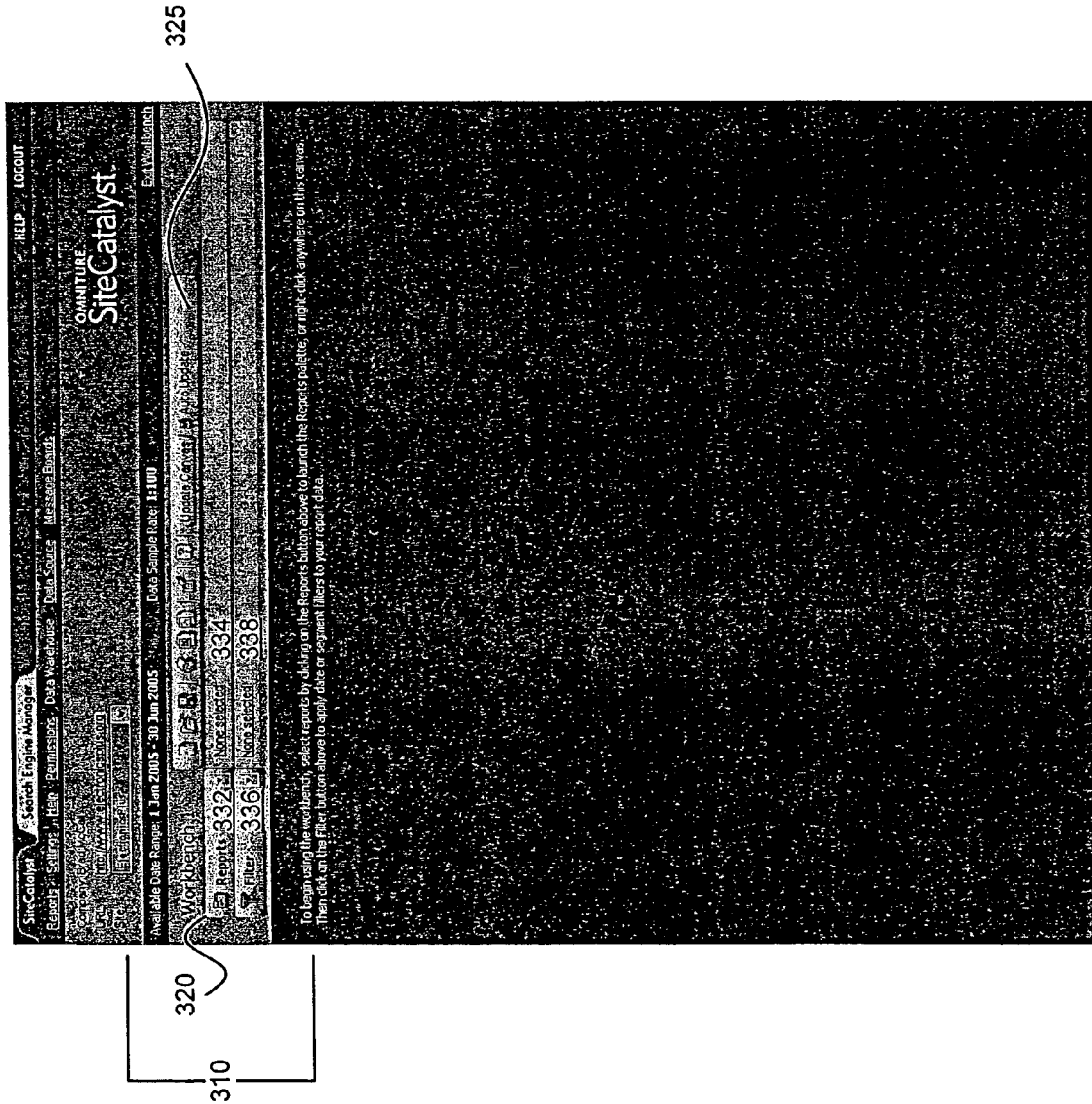


FIG. 3E

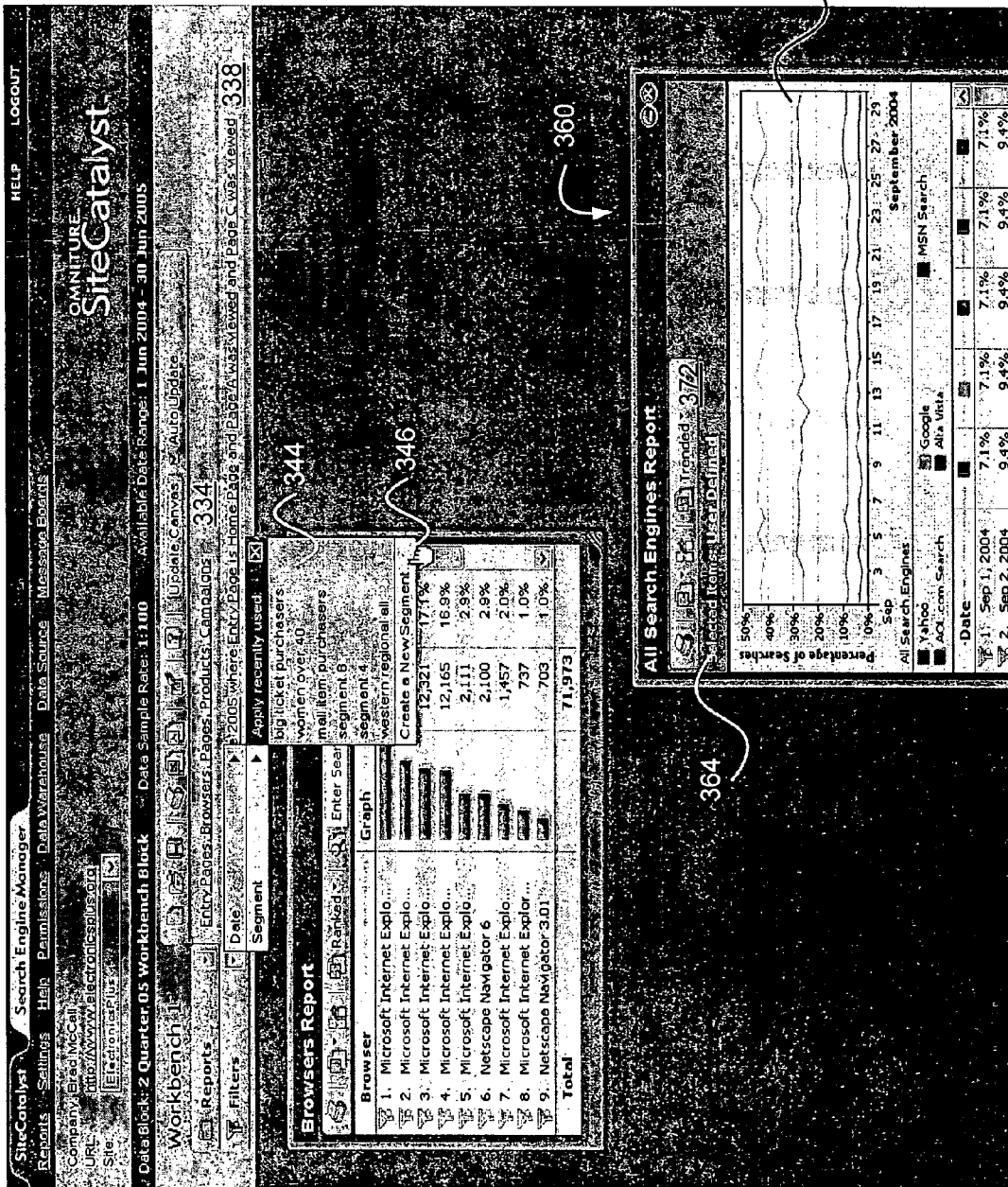


FIG. 3F

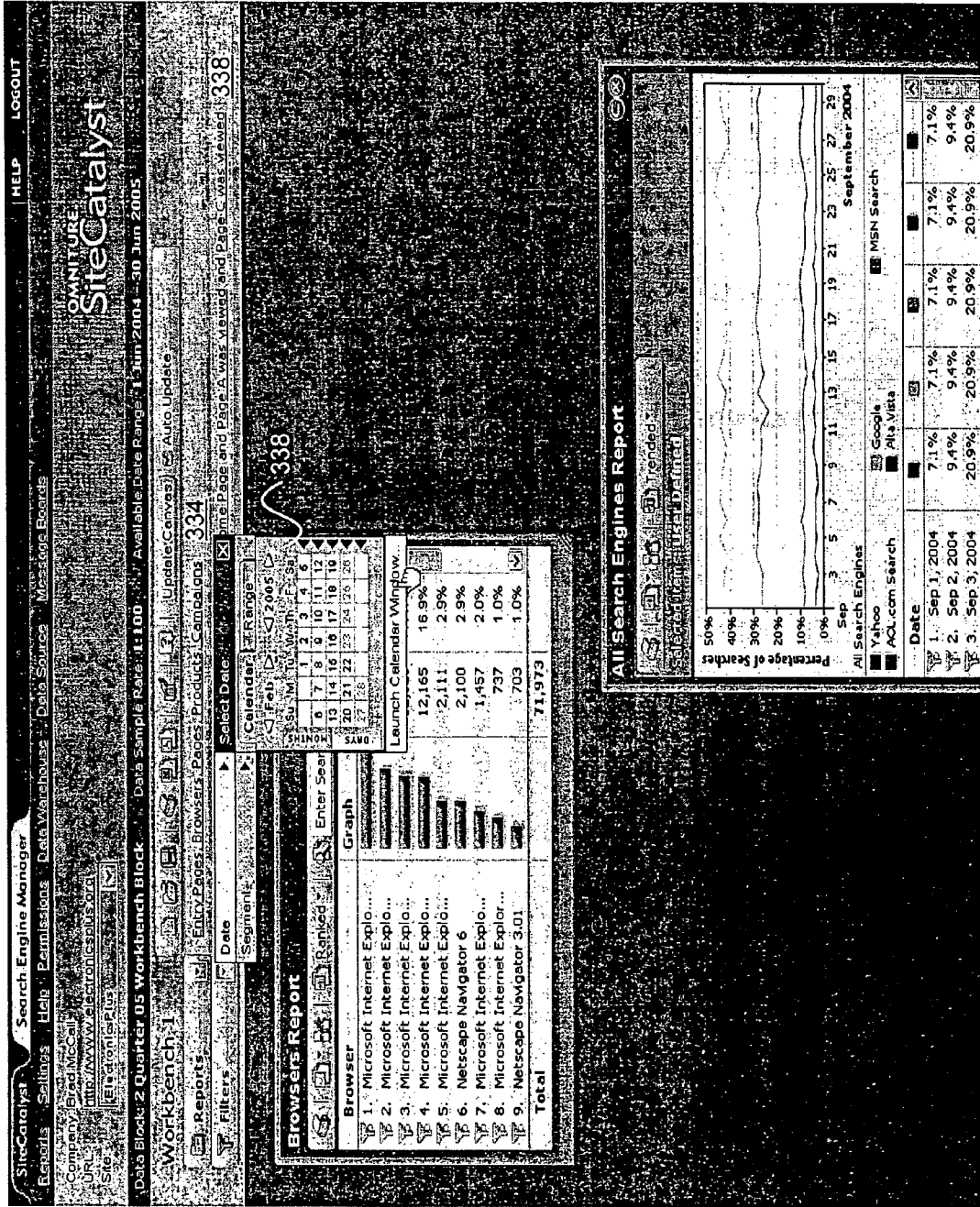


FIG. 3G

405

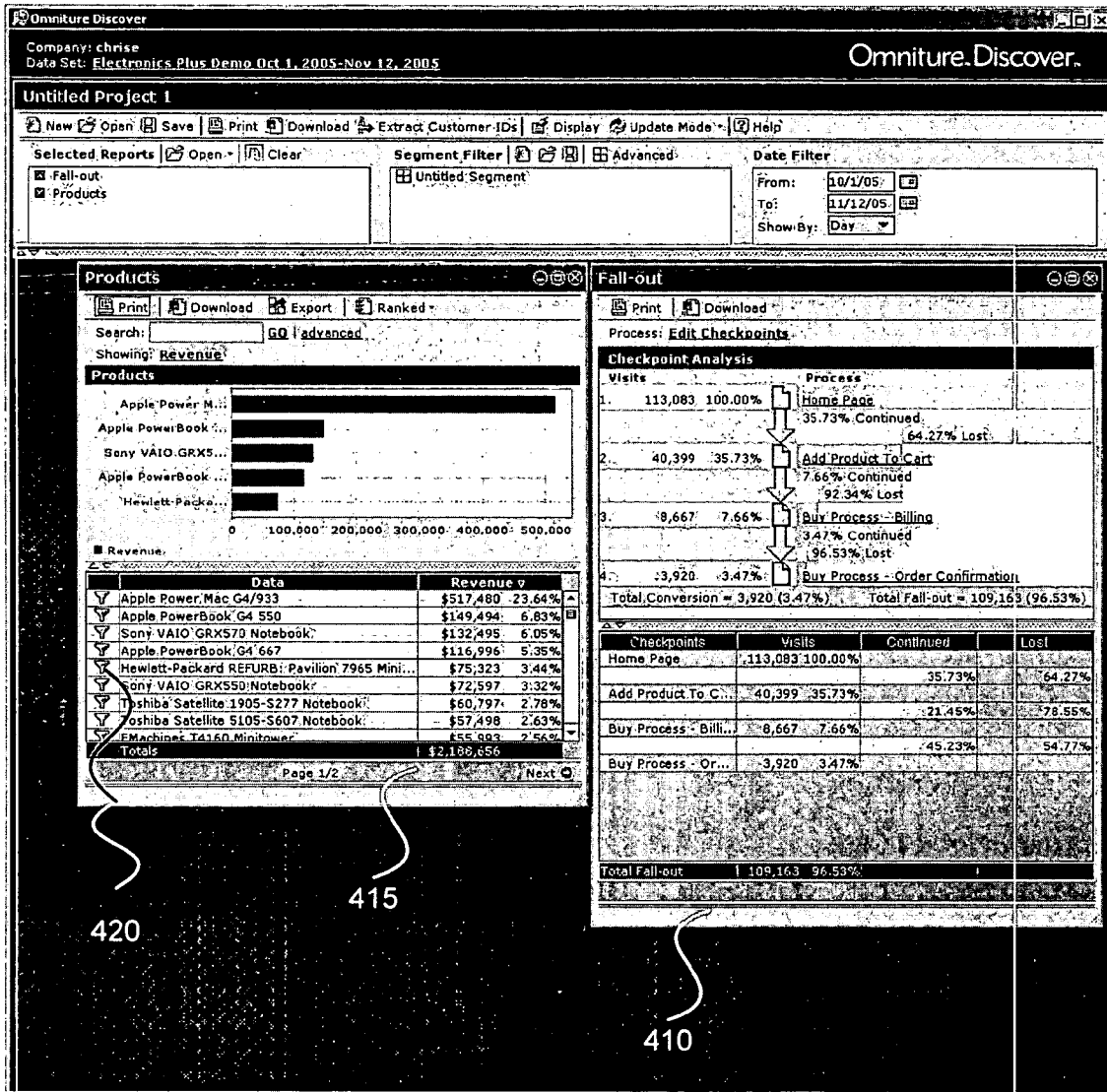


FIG. 4A

405

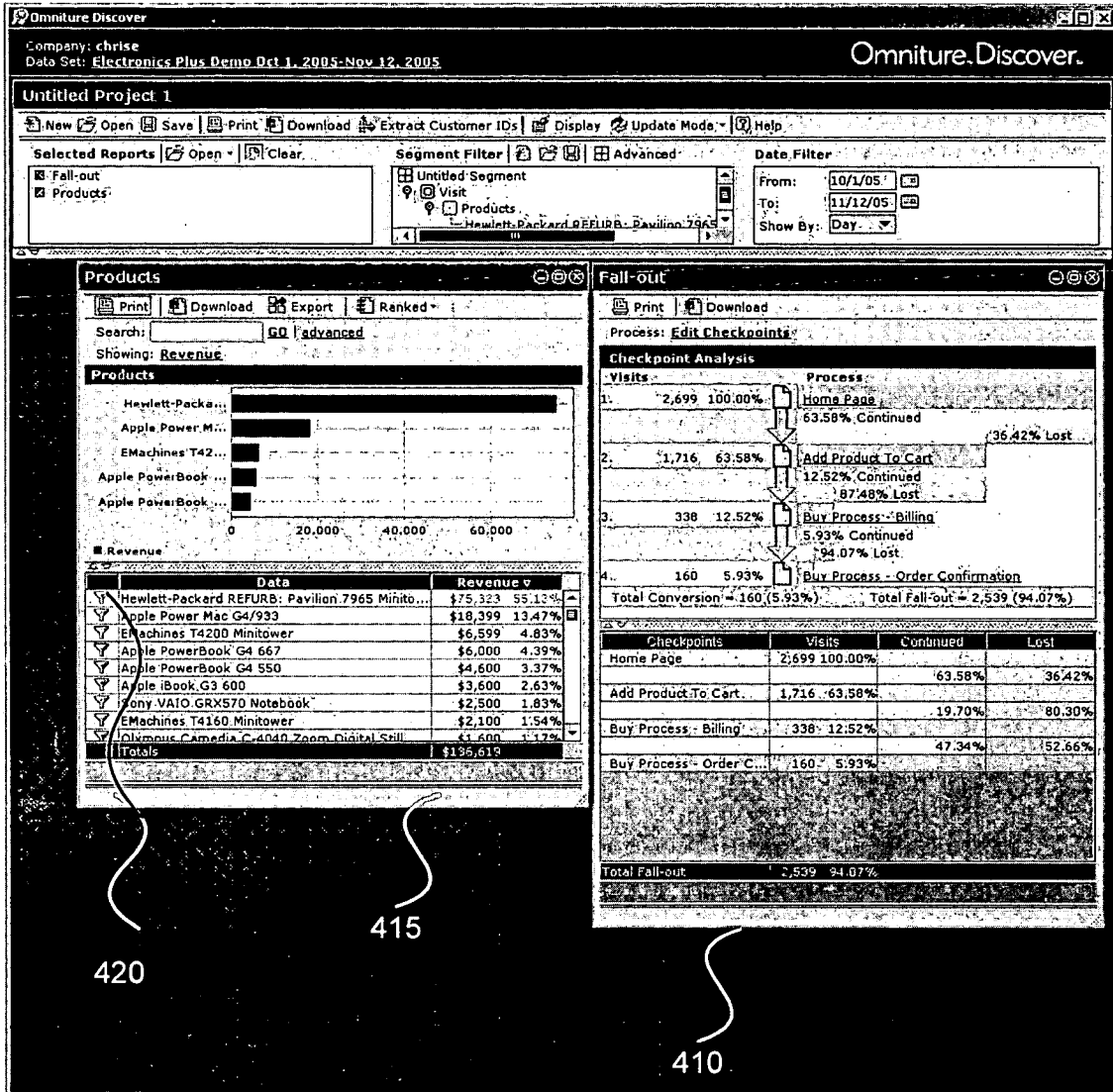


FIG. 4B

INCREMENTALLY ADDING SEGMENTATION CRITERIA TO A DATA SET

RELATED APPLICATIONS

This application claims priority under 35 U.S.C. § 119 from U.S. Provisional Application Ser. No. 60/687,626, filed Jun. 3, 2005 by Brett Error, entitled "Incrementally Adding Segmentation Criteria to a Data Set," and is related to U.S. patent application Ser. No. 10/993,397, filed Nov. 18, 2004 by Brett M. Error et al., entitled "Assigning Value to Elements Contributing to Business Success," and U.S. patent application Ser. No. 10/609,008, filed Jun. 27, 2003 by Brett Error et al., entitled "Capturing and Presenting Site Visitation Path Data," each incorporated herein by reference.

FIELD OF THE INVENTION

The present invention relates generally to website usage tracking, and more specifically to improved techniques for presenting and filtering website visitation data.

BACKGROUND

One of the most common sales mantras is "know your customer." This basic tenet of selling has grown far beyond knowing who enters the store; it requires among other things, knowing what attracts customers, what they look at, how they move around a marketplace, and how long they stay. By studying customer buying habits, retailers have been able to maximize their revenues through tailoring their promotions, offerings, and even store layouts to suit their customers' preferences and habits.

Thus, website providers often wish to collect data that describes usage and visitation patterns for their websites and for individual web pages within the sites. Such information can be extremely valuable in developing usage statistics for various purposes, including for example estimating server load, determining advertising rates, identifying areas of websites that are in need of redesign, and the like.

Such information is useful in many ways, including for example collecting feedback that leads to improved web page design, determining the effect of various degrees of prominence of links and graphic elements on web pages, and determining the contribution of individual links to an eventual sale.

Users, such as website administrators, often wish to filter and aggregate the results in many different ways. However, existing reporting systems do not allow the user to easily customize and filter results. Thus, much of the business utility of tracking website visitor/customer visitation data is lost using existing systems. Therefore, what is needed is an improved report format that visually depicts web page element usage and valuation statistics.

SUMMARY

The present invention provides a fast, responsive way for users to perform advanced analysis on data via a graphical user interface. Users can launch various pre-packaged reports onto a single workspace and easily click on any data item to filter the result set of all reports by that item. This allows users to quickly answer questions such as "What were the top referrers that drove visits in which the visitor purchased Item X or Item Y and viewed the Clearance Sale page?" The results are returned almost instantaneously, enabling users to analyze the effects of combinations of factors.

When viewing reports describing website visitation statistics, users often wish to filter and aggregate the results in many different ways. The present invention provides a flexible, easy-to-use mechanism for dynamically specifying filter criteria that provides virtually instantaneous feedback and allows the user to quickly add or remove filters to see results in whatever form he or she wishes.

The present invention includes a user interface that allows the user, while viewing a report, to click on additional filter criteria. The report is then updated virtually instantaneously so that it only includes report data that fit the specified criteria. Thus, the user can select various reports, add filter criteria by clicking on elements within the reports, and quickly see the resulting changes in the output.

These aspects of the present invention provide greater visibility of the information generated by the above-described methods, providing the website owner valuable insight into which elements of a website are contributing to the success of the site and contributing to return on investment.

The description in the specification is not all inclusive and, in particular, many additional features and advantages will be apparent to one of ordinary skill in the art in view of the drawings, specification, and claims. Moreover, it should be noted that the language used in the specification has been principally selected for readability and instructional purposes, and may not have been selected to delineate or circumscribe the inventive subject matter.

BRIEF DESCRIPTION OF THE DRAWINGS

FIG. 1 is a flowchart illustrating a method of incrementally adding segmentation criteria to a data set according to one embodiment of the present invention.

FIG. 2A is a block diagram illustrating a system useful for incrementally adding segmentation criteria to a data set according to one embodiment of the present invention.

FIG. 2B is a block diagram illustrating an architecture for a network according to one embodiment of the present invention.

FIG. 2C is a block diagram illustrating software modules used by a client according to one embodiment of the present invention.

FIGS. 3A and 3C-3C illustrate a user interface for incrementally adding segmentation criteria to a data set according to one embodiment of the present invention.

FIG. 3B illustrates a report of the user interface of FIG. 3A according to one embodiment of the present invention.

FIG. 3E shows a user interface illustrating another embodiment of a user interface for incrementally adding segmentation criteria to a data set according to the present invention.

FIG. 3F shows an open segment filter window of the user interface of FIG. 3E according to one embodiment of the present invention.

FIG. 3G shows an open date filter window of the user interface of FIG. 3E according to one embodiment of the present invention.

FIGS. 4A-B illustrate a user interface for incrementally adding segmentation criteria to a data set according to another embodiment of the present invention.

One skilled in the art will readily recognize from the following discussion that alternative embodiments of the structures and methods illustrated herein may be employed without departing from the principles of the invention described herein.

DETAILED DESCRIPTION OF THE EMBODIMENTS

The following description sets forth an embodiment wherein the invention takes place in the context of reporting

of website visitation data gathered in the course of an online purchase. However, the description is merely illustrative of the techniques of the invention; one skilled in the art will recognize that the techniques of the invention can be applied in any context wherein it is desirable to filter website visitation data.

In the course of purchasing an item from an online retailer, a visitor/customer generally follows a basic path. The visitor enters a website (by, for example, typing the URL for the website, or selected from a Favorites menu, or clicking on a link) and is presented with a home page for the online retailer. During the process, the visitor generally is presented with an item description. If the visitor wants to buy the item, he or she clicks on an "Add to Cart" link and navigates to a Checkout page and then to a page for entering billing and shipping information. After entering such information, the visitor generally is presented with a confirmation page where he or she is given the opportunity to review the order and finalize it before exiting the website. Analysis of visitor navigation through such sequence is extremely valuable to website administrators.

Techniques for collecting site path sequences are known in the art. A particular visitor is recognized as he or she moves from page to page; the mechanics of visitor tracking are known in the art and need not be described in detail here. Visitor/customer web page visit records are stored in sequence according to they time that they occurred. Each visitation record typically contains two types of information: an identifier of the page visited, and metadata that provides further criteria for filtering and analyzing the sequential data.

In some contexts, certain elements of the visitor navigation are designated as "checkpoints," meaning that they are of importance in analyzing website visitation paths. Generally, all instances of a particular sequence of checkpoints are considered to be equivalent, regardless of the presence or absence of any other (non-checkpoint) nodes within the sequences. Greater detail regarding the use of checkpoints can be found in co-pending U.S. patent application Ser. No. 10/609,008, filed Jun. 27, 2003 by Brett Error et al., entitled "Capturing and Presenting Site Visitation Path Data," which is incorporated herein by reference.

In one embodiment, the system automatically designates certain nodes as checkpoints based on particular characteristics, location, name, popularity, or any other factor. For example, the home page, and/or the five most popular pages, can automatically be designated as checkpoints. These automatic, or default, checkpoints can, in one embodiment, be used to construct an initial target path.

It is within this context that the description of one embodiment present invention is described herein.

FIG. 1 is a flowchart illustrating a method of incrementally adding segmentation criteria to a data set according to one embodiment of the present invention.

The process begins by receiving **110** user input to select one or more defined reports for viewing. In one embodiment, the user initiates this step by clicking on a user interface control such as a reports button.

Next, the system retrieves **120** a data set associated with the one or more defined reports, for example comprising website visitation data. In one embodiment, this is accomplished by sending report queries to a network, and receiving report data from the network corresponding to the queries. The network replies, in one embodiment, with data. In this embodiment the retrieval includes interpreting the data. In one example hash codes stored, e.g., in local cache are used.

After retrieval **120**, the system displays **130** the one or more defined reports. In one embodiment, each report displays a set

of default metrics, and the data are sorted by that metric. For example, an initial default metric may be visits to a website, although this can be customized by the user via an options screen. In one embodiment, the user can customize the default metrics on a per-report basis, for example by changing, adding, or deleting metrics.

In one embodiment, preprogrammed default metrics include Page Views; Visits; Hourly, Daily, Weekly, Monthly, Quarterly, or Yearly Unique Visitors; Revenue; Orders; Units; Cart Opens, Adds, Removes, and Views; Checkouts; Custom Events; Occurrences (the Product View, Campaign Click-thru, instance equivalents); and Participation Metrics.

Initially, the report shows a default number of data rows (such as 10), although the user can adjust the default number as desired. In various embodiments, the reports are standard, preset reports associated with a set of predefined filters; user-customized reports built during a current session; previously customized reports retrieved from storage; or fall-out reports.

A "fall-out report" is a report based, in one embodiment, on a target path specified in terms of checkpoints as described herein. A fall-out report indicates how many visitors continued to the next checkpoint in target path, regardless of whether the visitor/customer visited other, tangential pages before continuing. In one embodiment, the present invention provides a mechanism for generating and tailoring a "fall-out report" that provides statistics on visitation paths for specific checkpoint pages, without regard to other pages that are not designated as checkpoints. If the user chooses to apply one or more filters by clicking on elements of the report, the fall-out report is automatically updated accordingly. Thus, the user can easily specify the particular filter parameters for a fall-out report, and can easily modify, add, or remove such parameters as he or she sees fit.

In some embodiments, various views of the report data are available. For example, types of views include trended, improved, ranked, over time, fall-out, conversions, averages, graphical, Gantt, tabular, raw data, and flexible. Some reports also include a search field that allows the user to search for and view entries for specific keywords or phrases.

When a user desires to filter a report, the system receives **140** user input to adjust segmentation criteria for the report. In various embodiments, the adjustment to segmentation filter criteria includes adding segmentation criteria; removing pre-existing segmentation criteria; adjusting a date range; creating a new segmentation criterion; and activating a contextual menu of options for the segmentation criteria.

The user can filter a report by various means. For example, the user can click on an icon ("funnel") adjacent to the desired filter criterion. In one embodiment, clicking on a funnel icon causes the filter to be applied as an "OR Visits where [dimension]=[selected item]" parameter. In one embodiment, the user can shift-click to apply the filter as an "AND" criterion. In one embodiment, the user can right-click to see a menu of options for applying the filter. The icon acts as a toggle in one embodiment, switching between activating and deactivating the criterion depending on its current state.

According to one embodiment, elements of the displayed reports are themselves user input elements for specifying filters. Thus, the user can click on an area (such as a line) within a tabular report to apply a filter that corresponds to the data item being displayed in that area.

Next, the system processes the selected criteria, displaying **150** one or more adjusted reports. In one embodiment, each report is adjusted according to the segmentation criteria. In one embodiment, the adjusted reports are displayed virtually instantaneously following the user input to adjust the segmentation criteria. In one embodiment, sampling rate for reports

5

is selected based on requested date range, available RAM and other technological considerations.

As part of this process that system also may store the reports. A user can save and later re-open a project. When a user saves a project, the data set, filters, reports, and canvas appearance are all preserved. Subsequently, when the user opens the saved project, everything looks exactly as he or she left it.

One skilled in the art will recognize that the present invention can be used in connection with any type of filtering criteria that can be specified by the user, and/or with any combination of such filtering criteria. Examples include the ordinal visit number (indicating whether this is the visitor's first visit, second visit, etc.), which particular pages were visited, time of day of the visit, geographic location of the visitor, web browser being used, whether or not the visitor is using a beta version of the browser, and the like.

Referring now to FIG. 2A, there is shown an example of a system **200** useful for practicing the present invention according to one embodiment. One skilled in the art will recognize that the invention can be practiced using other embodiments that differ from the examples shown.

The system **200** includes a client **201**, a network **202**, and optionally a cache **209**, for incrementally adding segmentation criteria to a data set. The client **201** includes software including of a number of executable code portions and data files. These include code for viewing and interacting with website usage reports according to one embodiment of the present invention, as well as for supporting functionality of a user interface, as will be described in greater detail in conjunction with FIG. 2C.

Client **201** is responsible for orchestrating the processes performed according to the methods of the present invention. For example, client **201** receives input **212** from an input device, and sends reports to display **207** (or other output device) for output to the user. Client **201** runs on a standard personal computer.

Network **202** is a centralized network for handling and responding to client requests for data on website usage, as described further in conjunction with FIG. 2B.

A cache **209**, if present, is a standard cache of small, fast memory holding recently accessed data. The cache **209** may include, for example a list of hash codes or other look up tables for report data as described below.

In one embodiment, the components shown in FIG. 2A operate as follows. When a user requests one or more reports via an input device **210**, client **201** receives input **212** to this effect. Client **201** sends a query **203** to network **202**, specifying which reports are requested, and optionally specifying one or more filters for the reports. In one embodiment, query **203** is in XML format.

In response to query **203**, network **202** returns data **204** that contains a representation of the report data. Data **204**, in various embodiments, may be coded or not, and may be hashed data or may be included in a standard look up table. For example, data **204** may specify, in hash coded terms, the text string name of an item in a report. The data **204** is received by client **201**.

Client **201** stores, in local cache **209** in one embodiment, a list of previously received and decoded hash codes or look up table information, so that it can correctly interpret a hash code or table data that it has encountered previously. In one embodiment, local cache **209** is used and is cleared at the end of a session, so that only those codes previously received in the same session are stored in cache **209**. In other embodiments, local cache **209** is implemented in a more persistent or less persistent fashion, depending on user needs.

6

Upon receiving data **204**, client **201** consults cache **209** if present; if cache **209** contains the hash code(s) or meanings of data **204** (in other words, if client **201** has previously received data containing the same hash code/meaning), client **201** can interpret the meaning of the hash-coded or look-up table data without any further communication with network **202**. For example, a hash code/meaning may specify that term #299 signifies a visitor using Internet Explorer 6.0. If hash code(s)/meaning(s) from data **204** is/are not present, client **201** sends a query **205** to network **202**; network **202** responds by sending translation **206** to client **201**. Translation **206** provides client **201** with the meaning of terms. In one embodiment, client **201** stores this meaning in cache **209** for future use.

Once client **201** has received sufficient data to generate a report, it sends report to display **207** for output to the user. In one embodiment, if some meanings have not yet been received, client **201** still sends report, and report states that certain terms are unknown. In another embodiment, client **201** displays an error message and/or waits until more complete meaning data is available.

The user can interact with the displayed report via user input device **210** such as a mouse, keyboard, or the like. The user can click on areas within report; when the user clicks on an area that can be interpreted as a filter, client **201** generates and sends a new query **203** containing the new report filter criteria. The above process then repeats, and an updated report is sent to display **207**.

Referring now to FIG. 2B, there is shown an example of an architecture for network **202** according to one embodiment. Network **202** includes any number of front-end web servers **250** that receive queries **203**, **205** from client **201**, and any number of back-end servers **260** that obtain data from storage, e.g., from database **270**, analyze the obtained data, and send report data back to client **201**. Servers **250**, **260** are computers or devices that send and receive information using well known network protocols, such as TCP/IP and HTTP, for communication across a network. Back-end servers **260** send an appropriate data set to client **201** based on the filter request. For example, if a filter request specifies that the user is only interested in visitors that used a particular web browser, back-end servers **260** remove the data that does not match the specified criterion, and only forward to client **201** the data that does match.

Database **270** may be a relational database or any other type of database that stores the data used by client **201**. Database **270** may be accessible by client **201** through a user interface, e.g., as described in conjunction with FIGS. 3A-3G.

Database **270** contains website visitation data, which in one embodiment is stored in a binary format stored in some storage medium such as a hard drive. In one embodiment, the website visitation data is broken up into files, or "bricks," to facilitate extraction of portions of the data. When servers **260** extract data from database **270**, they are provided with specific bricks that match the criteria.

In one embodiment, when the user requests a report showing website visitation data for a specified time period, back-end servers **260** extract data from database **270** that contains web visitation logs and/or statistics. In one embodiment, servers **260** obtain data from database **270** that represents a snapshot of website visitation over a specified time period. Servers **260** then store this website visitation data in temporary local storage (such as random access memory), using for example a binary format that is encoded according to an algorithm so as to minimize bandwidth usage. In one embodiment, this binary format is identical to the format used in

database 270, so that no file format translation need be performed when servers 260 extract data from database 270. Servers 260 and then apply filters as requested, and send the filtered data to client 201.

In one embodiment, whenever the user requests a broader date range for website visitation data, back-end servers 260 perform a new data extraction from database 270. However, when the user narrows the date range from a previously specified range, no new data extraction is performed; rather back-end servers 260 filter the previously extracted data according to the new filter parameters.

FIG. 2C is a block diagram illustrating software modules used by a client according to one embodiment of the present invention. The modules include of a number of executable code portions and data files. These include code for creating and supporting a user interface according to one embodiment of the present invention, as well as for supporting incrementally adding segmentation criteria to a data set. The modules include an input module 275, a query module 280, an interpret module 285, and an output module 290.

The input module 275 is configured for receiving input to select one or more reports; receiving input to adjust segmentation criteria for one or more reports; receiving input to adjust one or more metrics; and receiving input for adjusting various aspects of displayed data. Thus, when a user requests one or more reports via an input device, the input module allows the client to receive input to this effect.

The query module 280 is configured for retrieving a data set comprising website visitation data associated with one or more reports; sending report queries to a network and receiving report data from the network corresponding to the queries; storing adjusted reports as one of the one or more defined reports. In one embodiment, when user input is received to filter the reports, a new query is generated and sent, repeating the process.

The interpret module 285 is configured for, in response to receiving data from the network, interpreting the data. In one embodiment, the interpret module 285 uses hash codes/meanings stored for this purpose. If hash codes/meanings are not present, for example in local cache, in one embodiment the interpret module 285 sends a query to the network, and receives back translation, providing the meaning of term.

The output module 290 is configured for displaying one or more defined reports; displaying one or more (singly or multiply) adjusted reports, each adjusted according to segmentation criteria; displaying one or more twice-adjusted reports, each adjusted according to the segmentation criteria. In one embodiment, the output module 290 sends reports to a display device for output to the user.

The above software portions 275-290 need not be discrete software modules. The software configuration shown is meant only by way of example; other configurations are contemplated by and within the scope of the present invention. User Interface

FIG. 3A illustrates a user interface 305 for incrementally adding segmentation criteria to a data set according to one embodiment of the present invention. In one embodiment, the user interface is implemented using a known environment such as Macromedia Flex, Java, DHTML, or any combination thereof.

The user interface 305 includes two main functional areas, a report control area 310 and a report display area 315. The report control area 310 includes functionality for creating projects and reports and for displaying report statistics. The report display area 315 includes functionality for displaying and filtering reports.

The report control area 310 further includes a project title 320, a project toolbar 325, a report selection area 330, a segment filter area 335, and a date filter area 340 according to one embodiment. The project title 320 displays the title of the project in use, and in one embodiment defaults to "Untitled Project 1" when no title has been selected, as illustrated in FIG. 3A. The project toolbar 325 is a standard toolbar, and includes icons for various project functionalities such as creating a new project, opening an existing project, saving the project in use, printing the project, etc. The report selection area 330 includes an open report button 345, a list of selected reports 355, and a clear button 350. The open report button 345 allows the user to open an existing report. Once opened, the report name is added to the list of selected reports 355, and the report 360 is displayed in the report display area 315. Each of the selected reports 360 in the list of selected reports 355 is displayed in the report display area 315. Report data is retrieved, e.g., by the process described in conjunction with FIGS. 2A-2B.

The segment filter area 335 displays a list of selected segmentation criteria, as shown in FIG. 3C. The segmentation filter area 335 also includes a new segment button 365 for manually adding segmentation criteria.

The date filter area 340 allows the user to filter the selected reports 360 by date, for example by selecting a date range for which the user would like to see the report 360 data. The date filter area 340 includes to and from date selectors 370 and a show by selector 375. The to and from date selectors 370 allow the user to set start and end dates for the data displayed in the report 360, either by typing in the desired dates or by clicking the calendar icon and selecting the dates on a calendar. The show by selector 375 allows the user to select the granularity of the report, for example, by day, week, or month.

FIG. 3E shows a user interface with another embodiment of a report control area 310. The report control area 310 includes a title 320 and toolbar 325 similar to those described in conjunction with FIG. 3A. However, this embodiment includes different user interface elements for selecting reports and filtering criteria. The report control area 310 includes a reports button 332 that operates to allow the user to select reports for viewing, similar to the functionality of open button 345. Once a report 360 is open, it is displayed in a report display list 334. The report display list 334 of FIG. 3E shows that no report has been selected. See FIGS. 3F-3G for other examples of report display lists 334. The report control area 310 also includes a filter button 336 that allows the user to select segment and date filter criteria. Clicking on the filter button 336 activates a drop-down that allows the user to choose date or segment filters, as shown in FIG. 3F-3G.

Once a filter is chosen, a textual description of the filter displays in the filter list 338. The filter list 338 of FIG. 3E shows that no filters have been selected. See FIGS. 3F-3G for other examples of filter lists 338.

The report display area 315 includes the reports 360 chosen in the reports selection area 330. FIG. 3B illustrates a report 360 in greater detail according to one embodiment of the present invention. Each report 360 displays data corresponding to one dimension within the context of a larger data set, for example, website visitation data. The report name 362 is the dimension that the selected report 360 displays. For each report 360, data is sorted according to one or more default metrics 364. In this example, the default metric 364 is visitors (to the website). In another embodiment, the metric(s) used can be user defined, as shown in the metric selector 364 of FIG. 3F.

Reports 360 also include a set of standard function keys, including a print button 366, a download button 368, and view

selector **372**. The print button **366** allows the user to print online reports without having to first download the reports. Clicking the print button opens a pop-up window with a printer-friendly version of the report.

The download button **368** allows the user to select the format in which to download the report (e.g., Word, Excel, PDF, HTML). Once the user selects a format, the report is sent to the user as an email attachment or is downloaded directly to the user's computer.

The view selector **372** allows the user to select various views of the report data. The Ranked view, shown in FIG. 3B, is the default view for most reports, allowing the user to view report data in tabular format according to the selected time periods. Other views include Improved, which allows the user to see how selected items performed between previous and current time periods based on success metrics such as revenue of checkouts, and Trended, which allows the user to view report trends over a given time. The user may select other available views using the view selector **372** drop-down. A Trended view **378** is shown in FIG. 3F; the view selector **372** displays Trended.

In addition, some reports **360** include a search field **374**. A search field **374** allows the user to search for and view entries for specific keywords or phrases. As a result of clicking "go," the report displayed will be filtered by the entered search term. In addition an advanced search button **376** allows the user to search with greater specificity, for example, by choosing whether to search for the exact phrase, perform an "and" or "or" search using the search terms, or exclude entries with the entered search terms. In one embodiment, clicking the advanced search button **376** opens a pop-up window displaying these options.

Each report **360** is divided into columns, including a filter column **380**, a data column **385**, and one or more metric columns **390**. The data column **385** includes a list of various forms of the dimension corresponding to the report **360**. In the depicted example, the dimension is Browsers, thus various browsers, such as Microsoft Internet Explorer 6.0, Netscape Navigator 6.2.3, etc., are listed. The metric column(s) **390** includes statistics for the respective row's **395** data column **385**. In the example depicted, for each browser (data column **385**), the metric column **390** displays visitors by number and percentage of the whole.

The filter column **380** of each row **395** includes an icon that allows the user to filter the data by that row **395**. All reports **360** are filtered to reflect the filter. In one embodiment, the filter column **380** icon acts as a toggle, narrowing or expanding the data depending on the present state of the data. Data may be further filtered if desired, and again all reports **360** are filtered by the additional criterion. In one embodiment, the filtering occurs virtually instantaneously. In addition, the rows are totaled in a totals row **396**.

Reports **360** display rows up to a pre-selected number for the user interface **305**. In one embodiment, the number of rows can be edited. The user can interact with on-screen report windows according to well known interaction techniques for window-based operating systems. For example, the user can drag edges to change the height and width; minimize, delete, and maximize; reposition/rearrange windows on the canvas by dragging the window title bar; and drag the column margins to resize column width.

FIG. 4A illustrates a user interface **405** for incrementally adding segmentation criteria to a data set according to one embodiment of the present invention. The user interface **405** is similar to that described in conjunction with FIG. 3A, however, a fall-out report **410** is one of the displayed reports. A fall-out report **410** is based, in one embodiment, on a target

path specified in terms of checkpoints as defined herein. Greater detail regarding the use of checkpoints, defining checkpoints, and detailed information about fall-out reports can be found in co-pending U.S. patent application Ser. No. 10/609,008, filed Jun. 27, 2003 by Brett Error et al., entitled "Capturing and Presenting Site Visitation Path Data," which is incorporated herein by reference.

In the example, four pages have been designated as checkpoints: the homepage, the Add Product to Cart page, the Buy Process—Billing Page, and the Buy Process—Order Confirmation page. Fall-out report **410** indicates how many users continued to the next checkpoint in target path, regardless of whether the user visited other, tangential pages before continuing. Users that did not continue are denoted as "lost." Fall-out report **410** thus corresponds to a target path through the website. An edit checkpoints link **415** takes the user to a screen for editing the target path.

The fall-out report **410** indicates, for example, that of those users that visited the homepage, 37.73% continued to the Add Product to Cart page and 64.27% were lost. Of those that visited the Add Product to Cart page, 7.66% continued to the Buy Process—Billing page and 92.34% were lost. Similar information is displayed for the remaining checkpoints. Cumulative percentages are shown for each checkpoint as well; these indicate the percentage of users reaching that checkpoint, based on the total number of users that visited the homepage at the beginning of target path. The actual number of users that reached each checkpoint is also shown, adjacent to the percentage. The report also includes statistics for total conversion (the number of users that visited all of the checkpoint nodes in the target path) and total fall-out (the number of users that visited the homepage but did not complete the target path) in terms of numbers and percentages.

Displayed with the fall-out report **410** is a standard products report **415**. The reports **410**, **415** displayed in FIG. 4A are unfiltered.

Interface Workflow

The following is a description of interface functionality for adding segmentation criteria according to one embodiment of the present invention in the context of FIGS. 3A-3G.

The user begins by launching a report, for example using the open button **345** of FIG. 3A or the reports button **332** of FIG. 3E, or by right-clicking anywhere on the canvas. FIG. 3E shows a blank canvas and FIG. 3A shows a canvas with four reports **360**. Initially, no filter is applied.

In one embodiment, a user can filter the report **360** by various means. For example, the user can click on an icon in the filter column **380** adjacent to the desired filter criterion. This icon can function as a toggle, so that when the filter is already added to the report, clicking on the icon causes it to be removed. In the report **360** shown in FIG. 3A, the user applies a filter on the term "browser" to only see visits from visitors using Internet Explorer 6.0. This is accomplished by clicking on the icon to the left of the data, i.e., by clicking on the filter column **380** of row **395a**. All reports **360** then filter based on the criteria selected; thus the other three reports **360** are showing only data with browser I.E. 6.0 as shown in FIG. 3C. Next, the user adds another filter to only see visitors running the Windows 98 operating system. This is done by clicking on the filter icon adjacent to Windows 98, i.e. filter column **380** of row **395c** of FIG. 3C. Then all four displayed reports **360**, including the one that already had the filter applied, show only data for visitors running both Windows 98 and I.E. 6.0, as shown in FIG. 3D.

Another way to filter the reports **360** is shown in FIG. 3E-3G. The user can click on the filter button **336** to apply date or segment filters to report data. Clicking on the filter

button **336** activates a drop-down that allows the user to choose date or segment filters, as shown in FIG. 3F-3G.

If the user filters by segment, in one embodiment an additional drop-down menu **344** displays with recently used segments, e.g., as shown in FIG. 3F. The menu **344** also includes an option to create a new segment **346**. If the user filters by date, in one embodiment a calendar **338** displays, e.g., as shown in FIG. 3G. The calendar **338** allows the user to select standard date ranges, such as days, weeks, months, and quarters, as well as custom date ranges.

Similar functionality for filtering by date and by segment can be accomplished in the embodiment shown in FIGS. 3A-3D, using the segment filter **335** and date filter **340** sections and accompanying functionality as described herein.

The user can save and later re-open any set of reports using the save button on the toolbar **325**.

Another example of report filtering is shown in conjunction with FIGS. 4A-4B. In one embodiment, a user can filter the reports **410**, **415** by various means. For example, the user can click on a filter icon **420** adjacent to the desired filter criterion. In the reports **410**, **415** shown in FIG. 4A, the user applies a filter on "Hewlett-Packard REFURB: Pavilion 7965 Mini . . ." to filter the information to visitors who purchased this product. This is accomplished by clicking on the icon **420**. All reports, in this example **410** and **415**, then filter based on the criteria selected; thus the fall-out report also shows only data for which the Hewlett-Packard REFURB: Pavilion 7965 Mini was purchased, as shown in FIG. 4B.

The present invention has been described in particular detail with respect to one possible embodiment. Those of skill in the art will appreciate that the invention may be practiced in other embodiments. First, the particular naming of the components, capitalization of terms, the attributes, data structures, or any other programming or structural aspect is not mandatory or significant, and the mechanisms that implement the invention or its features may have different names, formats, or protocols. Further, the system may be implemented via a combination of hardware and software, as described, or entirely in hardware elements. Also, the particular division of functionality between the various system components described herein is merely exemplary, and not mandatory; functions performed by a single system component may instead be performed by multiple components, and functions performed by multiple components may instead be performed by a single component.

Some portions of above description present the features of the present invention in terms of algorithms and symbolic representations of operations on information. These algorithmic descriptions and representations are the means used by those skilled in the data processing arts to most effectively convey the substance of their work to others skilled in the art. These operations, while described functionally or logically, are understood to be implemented by computer programs. Furthermore, it has also proven convenient at times, to refer to these arrangements of operations as modules or by functional names, without loss of generality.

Unless specifically stated otherwise as apparent from the above discussion, it is appreciated that throughout the description, discussions utilizing terms such as "determining" or "displaying" refer to the action and processes of a computer system, or similar electronic computing device, that manipulates and transforms data represented as physical (electronic) quantities within the computer system memories or registers or other such information storage, transmission or display devices.

Certain aspects of the present invention include process steps and instructions described herein in the form of an

algorithm. It should be noted that the process steps and instructions of the present invention could be embodied in software, firmware or hardware, and when embodied in software, could be downloaded to reside on and be operated from different platforms used by real time network operating systems.

The present invention also relates to an apparatus for performing the operations herein. This apparatus may be specially constructed for the required purposes, or it may include a general-purpose computer selectively activated or reconfigured by a computer program stored on a computer readable medium that can be accessed by the computer. Such a computer program may be stored in a computer readable storage medium, such as, but is not limited to, any type of disk including floppy disks, optical disks, CD-ROMs, magnetic-optical disks, read-only memories (ROMs), random access memories (RAMs), EPROMs, EEPROMs, magnetic or optical cards, application specific integrated circuits (ASICs), or any type of media suitable for storing electronic instructions, and each coupled to a computer system bus. Furthermore, the computers referred to in the specification may include a single processor or may be architectures employing multiple processor designs for increased computing capability.

The algorithms and operations presented herein are not inherently related to any particular computer or other apparatus. Various general-purpose systems may also be used with programs in accordance with the teachings herein, or it may prove convenient to construct more specialized apparatus to perform the required method steps. The required structure for a variety of these systems will be apparent to those of skill in the art, along with equivalent variations. In addition, the present invention is not described with reference to any particular programming language. It is appreciated that a variety of programming languages may be used to implement the teachings of the present invention as described herein, and any references to specific languages are provided for invention of enablement and best mode of the present invention.

The present invention is well suited to a wide variety of computer network systems over numerous topologies. Within this field, the configuration and management of large networks include storage devices and computers that are communicatively coupled to dissimilar computers and storage devices over a network, such as the Internet.

Finally, it should be noted that the language used in the specification has been principally selected for readability and instructional purposes, and may not have been selected to delineate or circumscribe the inventive subject matter. Accordingly, the disclosure of the present invention is intended to be illustrative, but not limiting, of the scope of the invention, which is set forth in the following claims.

What is claimed is:

1. A computer-implemented method for incrementally adding segmentation criteria to a data set, the method comprising:

receiving an indication of initial segmentation criteria to specify website visitation data to include in one or more initial reports;

retrieving a first data set comprising website visitation data according to the indicated initial segmentation criteria, the visitation data usable to generate the one or more initial reports;

displaying the one or more initial reports, including at least part of the website visitation data;

receiving user inputs indicating respective adjustments to respective ones of the initial segmentation criteria;

13

in response to receiving each user input, determining whether the respective adjustment broadens or narrows the respective one of the initial segmentation criteria; and
 responsive to determining that a received user input broadens the respective one of the segmentation criteria, retrieving a second data set comprising website visitation data, the second data set conforming to the broadened respective one of the segmentation criteria and to one or more others of the initial segmentation criteria; and
 responsive to retrieving the second data set: displaying one or more adjusted reports, including the second data set; responsive to determining that a received user input narrows the respective one of the segmentation criteria, determining one or more elements of the first data set that do not conform to the narrowed segmentation criterion; and
 responsive to determining one or more elements of the first data set that do not conform to the narrowed segmentation criterion: displaying a graphical representation of the first data set excluding the one or more determined elements.

2. The method of claim 1, further comprising receiving a user request to add a new segmentation criterion and in response, determining one or more elements of the second data set that do not conform to the added segmentation criteria, and displaying a graphical representation of the second data set excluding the one or more determined elements, wherein said determining and displaying do not include retrieving additional data.

3. The method of claim 1, further comprising receiving a user request to remove one of the segmentation criteria and in response, retrieving another data set of website visitation data, wherein the another data set does not conform to the removed one of the initial segmentation criteria but does conform to one or more others of the initial segmentation criteria.

4. The method of claim 1, wherein the adjusted one of the initial segmentation criteria comprises a date range.

5. The method of claim 1, wherein the adjusted one of the initial segmentation criteria comprises a browser type.

6. The method of claim 1, wherein the user input is provided using a contextual menu of segmentation criteria options.

7. The method of claim 1, wherein the first data set is sorted by one or more default metrics.

8. The method of claim 7, further comprising receiving user input to adjust the one or more default metrics.

9. The method of claim 1, further comprising associating the adjusted one of the initial segmentation criteria with the initial report.

10. The method of claim 1, wherein the initial report is a preset report and the initial segmentation criteria comprise a set of predefined segmentation criteria.

11. The method of claim 1, wherein the initial report comprises a user-customized report built during a current session.

12. The method of claim 1, wherein the initial report comprises a previously customized report retrieved from storage.

13. The method of claim 1, wherein the initial report comprises a fall-out report.

14. The method of claim 1, wherein retrieving the first data set further comprises:
 sending, over a network, one or more report queries including the initial segmentation criteria; and
 receiving, over the network, report data corresponding to the one or more report queries.

14

15. The method of claim 14, further comprising in response to receiving report data comprising website visitation data, interpreting the data using a look up table.

16. A system for incrementally adding segmentation criteria to a data set, the system comprising:
 a processor;
 a memory coupled to the processor and storing program instructions executable to implement:
 an input module configured for receiving an indication of initial segmentation criteria to specify website visitation data to include in one or more initial reports;
 a query module coupled to the input module, the query module configured for retrieving a first data set comprising website visitation data according to the indicated initial segmentation criteria, the visitation data usable to generate the one or more initial reports;
 an output module configured for displaying the one or more initial reports, including at least part of the website visitation data;
 the input module further configured for:
 receiving user inputs indicating respective adjustments to respective ones of the initial segmentation criteria;
 in response to receiving each user input, determining whether the respective adjustment broadens or narrows the respective one of the initial segmentation criteria;
 the query module further configured for:
 responsive to the input module determining that a received user input broadens the respective one of the segmentation criteria, retrieving a second data set comprising website visitation data, the second data set conforming to the broadened respective one of the segmentation criteria and to one or more others of the initial segmentation criteria;
 responsive to the input module determining that a received user input narrows the respective one of the segmentation criteria: determining one or more elements of the first data set that do not conform to the narrowed segmentation criterion; and
 the output module further configured for:
 responsive to the query module retrieving the second data set: displaying one or more adjusted reports, including the second data set;
 responsive to the query module determining one or more elements of the first data set that do not conform to the narrowed segmentation criterion: displaying a graphical representation of the first data set excluding the one or more determined elements.

17. The system of claim 16, wherein retrieving the first data set comprises sending one or more report queries to a network and receiving report data from the network corresponding to the one or more report queries.

18. The system of claim 17, further comprising an interpret module for, in response to receiving data from the network, interpreting the data.

19. The system of claim 16, wherein the first data set is sorted by one or more default metrics.

20. The system of claim 19, wherein the input module is further configured for receiving user input to adjust the one or more default metrics.

21. The system of claim 16, wherein the query module is further configured for associating the adjusted segmentation criterion with the one or more initial reports.

22. The system of claim 16, wherein the input module is further configured for receiving input for adjusting various aspects of the displayed data.

15

23. The system of claim 16, wherein:
the input module is further configured to receive a user
input indicating adjustment to another of the initial seg-
mentation criteria and to determine that the adjustment
to the another of the initial segmentation criteria narrows
the another of the initial segmentation criteria; and
the output module filtering the second data set according to
the narrowed segmentation criterion and displaying one

16

or more adjusted reports that do not include a filtered
portion of the filtered second data set;
wherein said determining, filtering, and displaying are per-
formed without retrieving additional data from over the
network.

* * * * *